

SafeSend Steve

- [Summary](#)
- [Message from Tax Preparer](#)
- [Tax Preparation Fees](#)
- [Review](#)
- [Forward a copy of my Tax Documents](#)
- [Download Tax Documents](#)
- [Attachments](#)
- [Signature Options](#)
- [Individual Signing](#)
- [Entity Signing](#)
- [Manually Sign](#)
- [Signer Delegation](#)
- [Paper File Return](#)
- [K-1 Distribution](#)
- [K-1 Distribution Electronically](#)
- [Distribute K-1's by Mail](#)
- [Tax Return Payments](#)
- [Estimated Tax Payments](#)



Summary



HATFIELD ASSOCIATES

Tax year: 2021 | Contact Person: JILL ANDERSON

2024 Tax Return

Click me to guide you through your tax return journey!

2024 Tax Return

Refunds	
Federal	\$1,107
Georgia	\$1,147
Total	\$2,254
Overpayments Applied	
Federal	\$1,000
Georgia	\$1,000
Total	\$2,000
Payments Due	\$29,500
Total	\$501,224
Total	\$15,958
Total	\$17,654
Total	\$620,516.00

2022 Estimated Payments

Q1	
Federal	\$135,891
Georgia	\$19,636
Total	\$155,527
Q2	
Federal	\$135,891
Georgia	\$19,636
Total	\$155,527
Q3	
Federal	\$135,891
Georgia	\$19,636
Total	\$155,527

Welcome JILL ANDERSON

Your 2021 tax returns are ready!

Please follow these easy steps so your taxes can be filed.

Review Documents | **Sign Documents** | **Make Payments**

[Click Here to Begin](#)

HATFIELD ASSOCIATES

Tax year: 2021 | Contact Person: JACK ANDERSON

2021 Tax Return

Refunds	
Federal	\$25,148
Georgia	\$6,312
Total	\$31,460
Overpayments Applied	
Federal	\$1,000
Georgia	\$1,000
Total	\$2,000
Payments Due	\$6,577
Total	\$6,577.00

2022 Estimated Payments

Q1	
Federal	\$6,110
Georgia	\$2,047
Total	\$8,157
Q2	
Federal	\$7,410
Georgia	\$2,147
Total	\$9,557
Q3	
Federal	\$7,110
Georgia	\$2,147
Total	\$9,257

Welcome to your Tax Return!

Meet SafeSend Steve!

SafeSend Steve is your personal help assistant that will be available to you throughout your entire tax return journey.

When you see SafeSend Steve, you can click on him and he will help you to navigate the specific part of the tax return journey you are on. He will provide helpful tips and tricks to keep you on course to completing your tax return journey.

Let's get started!

[Back](#) [Next](#)

HATFIELD ASSOCIATES Tax year: 2021 Contact Person GE MONEY FINANCIAL INSTITUTION

Summary Review Sign Distribute Pay

2021 Tax Return

Refunds		
Federal		\$20,500
Georgia		\$1,048
Total		\$21,548
Overpayments Applied		
Georgia		\$100
Total		\$100

2022 Estimated Payments

Q1 Georgia		\$345
Total		\$345
Q2 Georgia		\$445
Total		\$445
Q3 Georgia		\$444
Total		\$444
Q4 Georgia		\$444
Total		\$444

FINANCIAL INSTITUTION
Returns are ready!

This bar is a visual aid that represents your progress throughout your tax return journey. You are starting at "Summary" and will continue to review your tax return, sign it, then make payments if necessary.

Back Next

Review Documents Sign Documents Distribute K-1s Make Payments

Click Here to Begin



safesend.com

HATFIELD ASSOCIATES Tax year: 2021 Contact Person GE MONEY FINANCIAL INSTITUTION

Summary Review Sign Distribute Pay

2021 Tax Return

Refunds		
Federal		\$20,500
Georgia		\$1,048
Total		\$21,548
Overpayments Applied		
Georgia		\$100
Total		\$100

2022 Estimated Payments

Q1 Georgia		\$345
Total		\$345
Q2 Georgia		\$445
Total		\$445
Q3 Georgia		\$444
Total		\$444
Q4 Georgia		\$444
Total		\$444

Welcome GE MONEY
Your 2021 tax return is ready for review.

Please follow these easy steps to complete your return:

Review Documents Sign Documents

Click Here to Begin

Contact Information
Sarah Dill
testtaxflow202227@gmail.com
Share Screen

Contact Person will provide you with information for who to contact at your accounting firm regarding your tax return.

It will also provide the option to share your screen with a tax professional if necessary.

Note: Share Screen will only be shown if your tax professional allows it.

Back Next



safesend.com

HATFIELD ASSOCIATES Tax year: 2021 Contact Person GE MONEY FINANCIAL INSTITUTION

Summary Review Sign PaperFile Distribute

2021 Tax Return

Refunds		
Federal		\$20,500
Georgia		\$1,048
Total		\$21,548
Overpayments Applied		
Georgia		\$100
Total		\$100

2022 Estimated Payments

Q1	Georgia	\$345
Total		\$345
Q2	Georgia	\$445
Total		\$445
Q3	Georgia	\$444
Total		\$444
Q4	Georgia	\$444
Total		\$444

Welcome GE MONEY FINANCIAL INSTITUTION
Your 2021 tax returns are ready!

Please follow these easy steps so your taxes can be filed.

Review Documents Sign Documents Print and Mail Paper File Returns Distribute K-1s

Make Payments

Click Here to Begin

Settings will give you the option to make changes to your contact information as well as safely logout of your tax return. Click the **Setting** icon to see your options.



safesend.com

HATFIELD ASSOCIATES Tax year: 2021 Contact Person GE MONEY FINANCIAL INSTITUTION

Summary Review Sign PaperFile Distribute Pay

2021 Tax Return

Refunds		
Federal		\$20,500
Georgia		\$1,048
Total		\$21,548
Overpayments Applied		
Georgia		\$100
Total		\$100

2022 Estimated Payments

Q1	Georgia	\$345
Total		\$345
Q2	Georgia	\$445
Total		\$445
Q3	Georgia	\$444
Total		\$444
Q4	Georgia	\$444
Total		\$444

Welcome GE MONEY FINANCIAL INSTITUTION
Your 2021 tax returns are ready!

Please follow these easy steps so your taxes can be filed.

Review Documents Sign Documents Print and Mail Paper File Returns Distribute K-1s

Make Payments

Click Here to Begin

My Account
Click My Account.



safesend.com

HATFIELD ASSOCIATES

Tax year: 2021 | Contact Person: JACK ANDERSON

2021 Tax Return Summary

Category	Sub-category	Amount
Refunds	Alabama	\$1,167
	Total	\$1,167
Overpayments Applied	Alabama	\$1,000
	Total	\$1,000
Payments Due	Federal	\$29,500
	Federal	\$501,224
	Connecticut	\$15,955
	Georgia	\$81,534
	Total	\$628,516.00

2022 Estimated Payments

Quarter	Sub-category	Amount
Q1	Federal	\$135,891
	Alabama	\$12,154
	Georgia	\$19,636
	Total	\$167,681
Q2	Federal	\$135,891
	Alabama	\$12,154
	Georgia	\$19,636
	Total	\$168,681
Q3	Federal	\$135,891
	Alabama	\$12,154

My Account Modal:

Mobile Login Number
An access code will be sent to the following mobile device number every time you login
Mobile Device Number: [Enter Mobile Number](#)

Spouse Info
Spouse Name: JILL ANDERSON
Spouse Email Address: Spouse Mobile Number: (+)

[Cancel](#) [Save](#)

Notification: To add your mobile number, click the green link of **Enter Mobile Number**, enter your number and click **Save**.
Note: Once you add your mobile number, future access codes will be sent via text message.

[Click Here to Begin](#)

HATFIELD ASSOCIATES

Tax year: 2021 | Contact Person: GE MONEY FINANCIAL INSTITUTION

2021 Tax Return Summary

Category	Sub-category	Amount
Refunds	Federal	\$20,500
	Georgia	\$1,048
	Total	\$21,548
Overpayments Applied	Georgia	\$100
	Total	\$100

2022 Estimated Payments

Quarter	Sub-category	Amount
Q1	Georgia	\$345
	Total	\$345
Q2	Georgia	\$445
	Total	\$445
Q3	Georgia	\$444
	Total	\$444
Q4	Georgia	\$444
	Total	\$444

Notification: Here is an overview of your current tax payments and refunds, organized by authority. More details will be provided to you in the "Review" section of your tax return.

2021 tax returns are ready!

These easy steps so your taxes can be filed.

[Review Documents](#) [Sign Documents](#) [Print and Mail Paper File Returns](#) [Distribute K-1s](#)

[Make Payments](#)

[Click Here to Begin](#)

HATFIELD ASSOCIATES Tax year: 2021 Contact Person GE MONEY FINANCIAL INSTITUTION

Summary Review Sign PaperFile Distribute Pay

2021 Tax Return

Refunds		
Federal		\$20,500
Georgia		\$1,040
Total		\$21,540
Overpayments Applied		
Georgia		\$100
Total		\$100

2022 Estimated Payments

Q1 Georgia		\$345
Total		\$345
Q2 Georgia		\$445
Total		\$445
Q3 Georgia		\$444
Total		\$444
Q4 Georgia		\$444
Total		\$444

Welcome GE MONEY FINANCIAL INSTITUTION
Your 2021 tax returns are ready!

Please follow these easy steps so your taxes can be filed.

Review Documents Sign Documents Print and Mail Paper File Returns Distribute K-1s

Make Payments

[Click Here to Begin](#)

Here are your estimated payments for the next tax year, ordered by authority. More details will be provided to you in the "Pay" section of your tax return.

[Back](#) [Next](#)



safesend.com

HATFIELD ASSOCIATES Tax year: 2021 Contact Person GE MONEY FINANCIAL INSTITUTION

Summary Review Sign PaperFile Distribute Pay

2021 Tax Return

Refunds		
Federal		\$20,500
Georgia		\$1,040
Total		\$21,540
Overpayments Applied		
Georgia		\$100
Total		\$100

2022 Estimated Payments

Q1 Georgia		\$345
Total		\$345
Q2 Georgia		\$445
Total		\$445
Q3 Georgia		\$444
Total		\$444
Q4 Georgia		\$444
Total		\$444

Welcome GE MONEY FINANCIAL INSTITUTION
Your 2021 tax returns are ready!

Please follow these easy steps so your taxes can be filed.

Review Documents Sign Documents Print and Mail Paper File Returns Distribute K-1s

Make Payments

[Click Here to Begin](#)

Click to start your tax return journey!



safesend.com

HATFIELD & ASSOCIATES Tax year: 2021 Contact Person GE MONEY FINANCIAL INSTITUTION

Summary Review Sign Distribute

2021 Tax Return

Refunds		
Federal		\$20,500
Georgia		\$1,045
Total		\$21,545
Overpayments Applied		
Georgia		\$100
Total		\$100

2022 Estimated Payments

Q1	Georgia	\$345
Total		\$345
Q2	Georgia	\$445
Total		\$445
Q3	Georgia	\$444
Total		\$444
Q4	Georgia	\$444
Total		\$444

Welcome GE
Your 2021

Please follow these steps to complete your return:

- Review Documents
- Sign Documents
- Distribute K-1s
- Make Payments

Click Here to Begin

Share Screen

Here is where you can use screen share with your tax professional if needed.

Note: You will need to be in contact with your tax professional to be able to share with them.



safesend.com

HATFIELD & ASSOCIATES Tax year: 2021 Contact Person JACK ANDERSON

Summary Review Sign Distribute

2021 Tax Return

Refunds		
Federal		\$23,500
Georgia		\$6,045
Total		\$29,545
Overpayments Applied		
Federal		\$1,000
Georgia		\$1,000
Total		\$1,000

2022 Estimated Payments

Q1	Federal	\$6,110
Georgia		\$2,047
Total		\$8,157
Q2	Federal	\$7,110
Georgia		\$2,147
Total		\$9,257

Share Screen

Enter Code

Cancel Share

When speaking with your tax professional, they will provide you with a code that you enter here so you can share your screen.

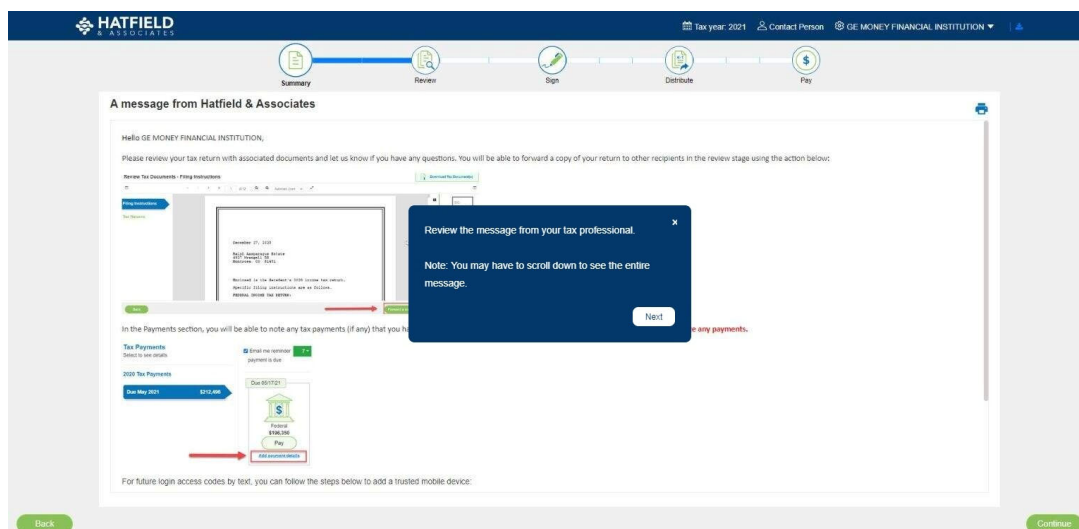
Back Next

Click Here to Begin



safesend.com

Message from Tax Preparer



The screenshot displays the SafeSend Returns web application interface. At the top, the header includes the "HATFIELD & ASSOCIATES" logo, the tax year "2021", and the contact person "GE MONEY FINANCIAL INSTITUTION". A progress bar shows the steps: Summary, Review, Sign, Distribute, and Pay. The main content area is titled "A message from Hatfield & Associates" and contains a message from GE MONEY FINANCIAL INSTITUTION. The message text reads: "Hello GE MONEY FINANCIAL INSTITUTION, Please review your tax return with associated documents and let us know if you have any questions. You will be able to forward a copy of your return to other recipients in the review stage using the action below." Below the message, there is a "Review Tax Documents" section with a "Download Documents" button. A modal dialog box is open, displaying the message: "Review the message from your tax professional. Note: You may have to scroll down to see the entire message." The dialog has a "Next" button. In the background, the "Tax Payments" section is visible, showing a "2020 Tax Payments" summary with a "Due May 2021" date and a "Pay" button. The interface also includes "Back" and "Continue" buttons at the bottom.

HATFIELD ASSOCIATES Tax year: 2021 Contact Person GE MONEY FINANCIAL INSTITUTION

Summary Review Sign Distribute

A message from Hatfield & Associates

Hello GE MONEY FINANCIAL INSTITUTION,

Please review your tax return with associated documents and let us know if you have any questions. You will be able to forward a copy of your return to other recipients in the review stage using the action below:

Review Tax Documents - Filing Instructions [View Instructions](#)

File Return

December 31, 2021
2021 Filing Instructions
Return ID: 123456789

Received by the Receiver's Office (Income Tax return)
Received by the Receiver's Office (GST return)
Received by the Receiver's Office (Other tax return)

Next **Cancel**

In the Payments section, you will be able to note any tax payments (if any) that you have made. **Please note, this is only for recordkeeping purposes and will not authorize any payments.**

Tax Payments
Select to view details

2020 Tax Payments

Due May 2021 \$172,000

Due \$172,000

Pay

For future login access codes by text, you can follow the steps below to add a trusted mobile device:

Back **Continue**

You can Print the message if necessary. **Back** **Next**

HATFIELD ASSOCIATES Tax year: 2021 Contact Person GE MONEY FINANCIAL INSTITUTION

Summary Review Sign Distribute Pay

A message from Hatfield & Associates

Hello GE MONEY FINANCIAL INSTITUTION,

Please review your tax return with associated documents and let us know if you have any questions. You will be able to forward a copy of your return to other recipients in the review stage using the action below:

Review Tax Documents - Filing Instructions [View Instructions](#)

File Return

December 31, 2021
2021 Filing Instructions
Return ID: 123456789

Received by the Receiver's Office (Income Tax return)
Received by the Receiver's Office (GST return)
Received by the Receiver's Office (Other tax return)

Next **Cancel**

In the Payments section, you will be able to note any tax payments (if any) that you have made. **Please note, this is only for recordkeeping purposes and will not authorize any payments.**

Tax Payments
Select to view details

2020 Tax Payments

Due May 2021 \$172,000

Due \$172,000

Pay

For future login access codes by text, you can follow the steps below to add a trusted mobile device:

Back **Continue**

Click Continue.

Tax Preparation Fees

safesend.com

HATFIELD & ASSOCIATES Tax year: 2021 Contact Person GE MONEY FINANCIAL INSTITUTION

Summary Review Sign PaperFile Outline Pay

Tax Preparation Fees

Here, you will find an invoice provided from your tax professional.

If your tax professional allows it, you may be able to pay the invoice here as well through a third party vendor.

Next

JANUARY 6, 2022

GE MONEY
FINANCIAL INSTITUTION
17490 SKYPARK CIRCLE, SUITE 100
IRVINE, CA 9261800

PROFESSIONAL SERVICES RENDERED IN THE PREPARATION OF YOUR 2021
INDIVIDUAL INCOME TAX RETURNS, INCLUDING:

FORM 1045 U.S. INDIVIDUAL INCOME TAX RETURN

COMPUTER CHARGE TAX	\$ 205.00
PREPARATION FEE	1800.00
TOTAL DUE	1800.00

Back Pay Now Continue

safesend.com

HATFIELD ASSOCIATES

Tax year: 2021 | Contact Person | GE MONEY FINANCIAL INSTITUTION

Summary | **Review** | Sign | PaperFile | Distribute | Pay

Tax Preparation Fees

JANUARY 6, 2022

GE MONEY
FINANCIAL INSTITUTION
17890 SEYFARK CIRCLE, SUITE 100
IRVINE, CA 926100

PROFESSIONAL SERVICES RENDERED IN THE PREPARATION OF YOUR 2021
INDIVIDUAL INCOME TAX RETURNS, INCLUDING:

FORM 1045 U.S. INDIVIDUAL INCOME TAX RETURN

COMPUTER CHARGE TAX	\$ 205.00
PREPARATION FEE	1800.00

When you click on **Pay Now**, you will be directed to another browser window to initiate and process payment through a third party system.

Note: You will need to navigate back to the SafeSend Returns tab to continue with your tax return journey.

Back | **Pay Now** | Continue

SafeSend Returns safesend.com

HATFIELD ASSOCIATES

Tax year: 2021 | Contact Person | GE MONEY FINANCIAL INSTITUTION

Summary | **Review** | Sign | PaperFile | Distribute | Pay

Tax Preparation Fees

JANUARY 6, 2022

GE MONEY
FINANCIAL INSTITUTION
17890 SEYFARK CIRCLE, SUITE 100
IRVINE, CA 926100

PROFESSIONAL SERVICES RENDERED IN THE PREPARATION OF YOUR 2021
INDIVIDUAL INCOME TAX RETURNS, INCLUDING:

FORM 1045 U.S. INDIVIDUAL INCOME TAX RETURN

COMPUTER CHARGE TAX	\$ 205.00
PREPARATION FEE	1800.00

Click Continue.

Back | **Pay Now** | Continue

SafeSend Returns safesend.com

Review

safesend.com

HATFIELD & ASSOCIATES Tax year: 2021 Contact Person GE MONEY FINANCIAL INSTITUTION

Summary Review Sign PaperFile Outbox Pay

Review Tax Documents - Filing Instructions

Download Tax Document(s)

Filing Instructions

Tax Returns

Attachments

Paper File Returns

During the **Review Your Tax Documents** step you will be able to review filing instructions, tax returns, and any attachments provided to you by your tax professional.

You will also be able to download any of your tax documents and can also forward the documents to someone else if necessary.

Download Tax Documents and Forward a copy of my tax documents will be available on other pages during the **Review** steps only. For help with these, click the links below.

[Download Tax Documents](#)

[Forward a Copy of My Tax Return](#)

Next

Back Forward a copy of my tax documents Continue

Dec 17, 2021
De M
1789
Irvi
De M
We b
the
This
with
sign
the
No p
amou
Attached are schedules K-1 for all partners indicating their share of income, deductions and credits to be reported on their respective tax returns. These schedules should be immediately forwarded to each of the partners.

Class
Federal
Transmittals
Transmittals
Transmittals
Transmittals
Transmittals
Transmittals
Georgia
Transmittals
Transmittals
Transmittals
Transmittals

safesend.com

HATFIELD ASSOCIATES Tax year: 2021 Contact Person GE MONEY FINANCIAL INSTITUTION

Summary Review Sign PaperFile Distribute Pay

Review Tax Documents - Filing Instructions [Download Tax Document\(s\)](#)

1 of 10 Automatic Zoom

Filing Instructions

- Tax Returns
- Attachments
- Paper File Returns

You can review all the pieces of your tax return by clicking on the tabs to move through each section.

Back Next

800-800-1111

December 22, 2021

Ge Money Financial Institution
Skiyark Circle, Suite 100
CA 926100

Re: [REDACTED]

We have prepared and enclosed your 2021 Partnership return for the year ended December 31, 2021.

This return has been prepared for electronic filing. If you wish to have it transmitted electronically to the IRS, please sign, date, and return Form 8879-PF to our office. We will then submit your electronic return to the IRS. Do not mail the paper copy of the return to the IRS.

No payment is required as you have an overpayment in the amount of \$20,500.00.

Attached are Schedules K-1 for all partners indicating their share of income, deductions and credits to be reported on their respective tax returns. These schedules should be immediately forwarded to each of the partners.

Back Forward a copy of my tax documents Continue



safesend.com

HATFIELD ASSOCIATES Tax year: 2021 Contact Person GE MONEY FINANCIAL INSTITUTION

Summary Review Sign PaperFile Distribute Pay

Review Tax Documents - Filing Instructions [Download Tax Document\(s\)](#)

1 of 10 Automatic Zoom

Filing Instructions

- Tax Returns
- Attachments
- Paper File Returns

The arrows will allow you to move to the next page if multiple pages exist for the section you are reviewing.

Automatic Zoom

Use the zoom icons to make the pages larger or smaller if needed.

Back Next

December 22, 2021

Ge Money Financial Institution
Skiyark Circle, Suite 100
CA 926100

Re: [REDACTED]

We have prepared and enclosed your 2021 Partnership return for the year ended December 31, 2021.

This return has been prepared for electronic filing. If you wish to have it transmitted electronically to the IRS, please sign, date, and return Form 8879-PF to our office. We will then submit your electronic return to the IRS. Do not mail the paper copy of the return to the IRS.

No payment is required as you have an overpayment in the amount of \$20,500.00.

Attached are Schedules K-1 for all partners indicating their share of income, deductions and credits to be reported on their respective tax returns. These schedules should be immediately forwarded to each of the partners.

Back Forward a copy of my tax documents Continue



safesend.com

HATFIELD & ASSOCIATES

Tax year: 2021 | Contact Person | GE MONEY FINANCIAL INSTITUTION

Summary | **Review** | Sign | PaperFile | Distribute | Pay

Review Tax Documents - Filing Instructions

Download Tax Document(s)

1 of 10 | Automatic Zoom

Filing Instructions

- Tax Returns
- Attachments
- Paper File Returns

December 22, 2021

800-800-1111

Ge Money Financial Institution
17890 Skypark Circle, Suite 100
Irvine, CA 926100

Ge Money:

We have prepared and enclosed your 2021 Partnership return for the year ended December 31, 2021.

This return has been prepared for electronic filing. If you wish to have it transmitted electronically to the IRS, please sign, date, and return Form 8879-PB to our office. We will then submit your electronic return to the IRS. Do not mail the paper copy of the return to the IRS.

No payment is required as you have an overpayment in the amount of \$20,500.00.

Attached are Schedules K-1 for all partners indicating their share of income, deductions and credits to be reported on their respective tax returns. These schedules should be immediately forwarded to each of the partners.

The bookmarks here will also allow you to navigate to specific pages of your tax documents if needed.

Note: You can also change the list from bookmark view to thumbnail view.

Back | Next

Back | Forward a copy of my tax documents | Continue

SafeSend Returns

safesend.com

HATFIELD & ASSOCIATES

Tax year: 2021 | Contact Person | GE MONEY FINANCIAL INSTITUTION

Summary | **Review** | Sign | PaperFile | Distribute | Pay

Review Tax Documents - Filing Instructions

Download Tax Document(s)

1 of 10 | Automatic Zoom

Filing Instructions

- Tax Returns
- Attachments
- Paper File Returns

December 22, 2021

800-800-1111

Ge Money Financial Institution
17890 Skypark Circle, Suite 100
Irvine, CA 926100

Ge Money:

We have prepared and enclosed your 2021 Partnership return for the year ended December 31, 2021.

This return has been prepared for electronic filing. If you wish to have it transmitted electronically to the IRS, please sign, date, and return Form 8879-PB to our office. We will then submit your electronic return to the IRS. Do not mail the paper copy of the return to the IRS.

No payment is required as you have an overpayment in the amount of \$20,500.00.

Attached are Schedules K-1 for all partners indicating their share of income, deductions and credits to be reported on their respective tax returns. These schedules should be immediately forwarded to each of the partners.

You can also navigate the sections of your tax return by clicking on the Continue button.

Back | Forward a copy of my tax documents | Continue

SafeSend Returns

safesend.com

Forward a copy of my Tax Documents



safesend.com

HATFIELD & ASSOCIATES Tax year: 2021 Contact Person GE MONEY FINANCIAL INSTITUTION

Summary Review Sign Distribute Pay

Review Tax Documents - Filing Instructions [Download Tax Documents](#)

1 of 10 Automatic Zoom

Filing Instructions

Tax Returns

Class

- Federal
 - Transmittals
 - Transmittals
 - Transmittals
 - Transmittals
 - Transmittals
- Georgia
 - Transmittals
 - Transmittals
 - Transmittals
 - Transmittals

800-800-1111

December 22, 2021

Ge Money Financial Institution
17890 Skyway Circle, Suite 100
Irvine, CA 926100

Ge Money:

We have prepared and enclosed your 2021 Partnership return for the year ended December 31, 2021.

This return has been prepared for electronic filing. If you wish to have it transmitted electronically to the IRS, please sign, date, and return Form 8879-PK to our office. We will then submit your electronic return to the IRS. Do not mail the paper copy of the return to the IRS.

No payment is required as you have an overpayment in the amount of \$20,500.00.

Attached are Schedules K-1 for all partners indicating their share of income, deductions and credits to be reported on their respective tax returns. These schedules should be immediately forwarded to each of the partners.

Click Forward a copy of my tax documents.

[Back](#) [Forward a copy of my tax documents](#) [Continue](#)



safesend.com

Forward a copy of my tax documents

Please enter the email addresses that you would like to share the tax documents with. Documents will be sent from torreyh@safesendreturns.com. Recipients will be required to enter an Access Code which will be sent in a secondary email or with text message authorization.

Note: Recipients will only be able to download copies of tax documents. They will not be able to sign forms or manage payments.

Choose the document(s) to forward:

- ☐ Select All
- ☐ Filing Instructions
- ☐ E-file Forms
- ☐ Vouchers
- ☐ Tax Return
- ☐ Tax Preparation Fee

Add Contact(s):

Email Address	Country Code	Mobile Number
	SECC...	()-

[Add New Contact](#)

[Cancel](#) [Email Tax Documents](#)

Ge Money:

We have prepared and enclosed your 2021 Partnership return for the year ended December 31, 2021.

This return has been prepared for electronic filing. If you wish to have it transmitted electronically to the IRS, please sign, date, and return Form 8879-PF to our office. We will then submit your electronic return to the IRS. Do not mail the paper copy of the return to the IRS.

No payment is required as you have an overpayment in the amount of \$20,568.00.

Attached are Schedules K-1 for all partners indicating their share of income, deductions and credits to be reported on their respective tax returns. These schedules should be immediately forwarded to each of the partners.


safesend.com

Forward a copy of my tax documents

Please enter the email addresses that you would like to share the tax documents with. Documents will be sent from torreyh@safesendreturns.com. Recipients will be required to enter an Access Code which will be sent in a secondary email or with text message authorization.

Note: Recipients will only be able to download copies of tax documents. They will not be able to sign forms or manage payments.

Choose the document(s) to forward:

- ☐ Select All
- ☐ Filing Instructions
- ☐ E-file Forms
- ☐ Vouchers
- ☐ Tax Return
- ☐ Tax Preparation Fee

Add Contact(s):

Email Address	Country Code	Mobile Number
	SECC...	()-

[Add New Contact](#)

[Cancel](#) [Email Tax Documents](#)

In order to forward documents to a recipient, an email address is required to be entered.

If a mobile number is added, the recipient will receive the access code via text message.

[Back](#) [Next](#)

Ge Money:

We have prepared and enclosed your 2021 Partnership return for the year ended December 31, 2021.

This return has been prepared for electronic filing. If you wish to have it transmitted electronically to the IRS, please sign, date, and return Form 8879-PF to our office. We will then submit your electronic return to the IRS. Do not mail the paper copy of the return to the IRS.

No payment is required as you have an overpayment in the amount of \$20,568.00.

Attached are Schedules K-1 for all partners indicating their share of income, deductions and credits to be reported on their respective tax returns. These schedules should be immediately forwarded to each of the partners.


safesend.com

Forward a copy of my tax documents

Please enter the email addresses that you would like to share the tax documents with. Documents will be sent from joseph@safesendreturns.com. Recipients will be required to enter an Access Code which will be sent in a secondary email or with text message authorization.

Note: Recipients will only be able to download copies of tax documents. They will not be able to sign forms or manage payments.

Choose the document(s) to forward:

- ☐ Select All
- ☐ Filing Instructions
- ☐ E-file Forms
- ☐ Vouchers
- ☐ Tax Return
- ☐ Tax Preparation Fee

Add Contact(s):

Email Address	Country Code	Mobile Number
	SECD	()

[Add New Contact](#)

[Cancel](#) [Email Tax Documents](#)

If needed, you can add additional recipients to receive your tax documents by Clicking the button.

[Back](#) [Next](#)

Forward a copy of my tax documents

Please enter the email addresses that you would like to share the tax documents with. Documents will be sent from joseph@safesendreturns.com. Recipients will be required to enter an Access Code which will be sent in a secondary email or with text message authorization.

Note: Recipients will only be able to download copies of tax documents. They will not be able to sign forms or manage payments.

Choose the document(s) to forward:

- ☐ Select All
- ☐ Filing Instructions
- ☐ E-file Forms
- ☐ Vouchers
- ☐ Tax Return
- ☐ Tax Preparation Fee

Add Contact(s):

Email Address	Country Code	Mobile Number
	SECD	()

[Add New Contact](#)

[Cancel](#) [Email Tax Documents](#)

Click Email Tax Documents when you have added all recipients and required information.
Click Cancel if you no longer need to forward your tax documents

Download Tax Documents



safesend.com

HATFIELD & ASSOCIATES Tax year: 2021 Contact Person GE MONEY FINANCIAL INSTITUTION

Summary Review Sign Distribute

Click Download Tax Document(s). Download Tax Document(s)

Review Tax Documents - Filing Instructions

Filing Instructions Tax Returns

1 of 10 Automatic Zoom

December 22, 2021

800-800-1111

Ge Money Financial Institution
17890 Skyway Circle, Suite 100
Irvine, CA 926100

Ge Money:

We have prepared and enclosed your 2021 Partnership return for the year ended December 31, 2021.

This return has been prepared for electronic filing. If you wish to have it transmitted electronically to the IRS, please sign, date, and return Form 8879-PK to our office. We will then submit your electronic return to the IRS. Do not mail the paper copy of the return to the IRS.

No payment is required as you have an overpayment in the amount of \$20,500.00.

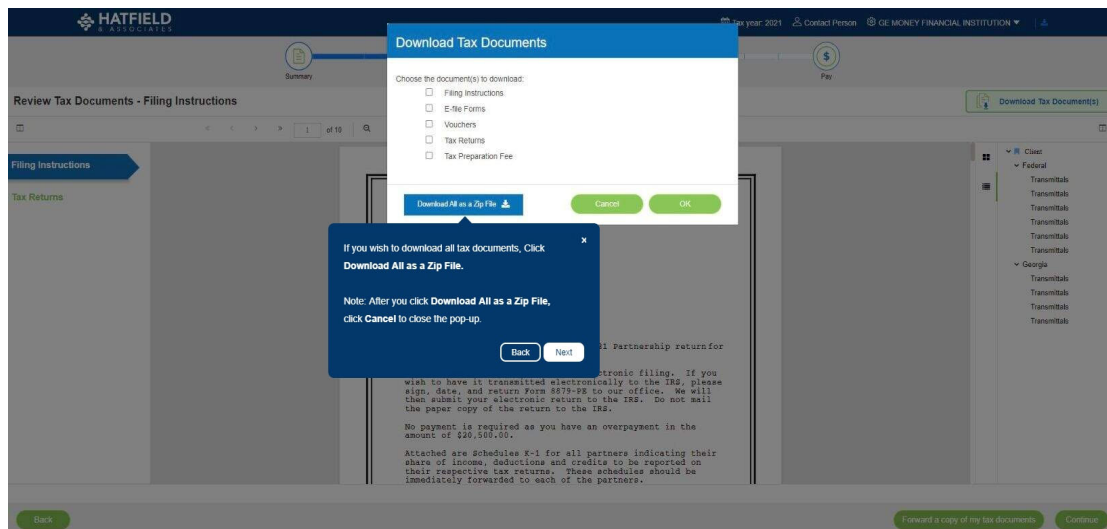
Attached are Schedules K-1 for all partners indicating their share of income, deductions and credits to be reported on their respective tax returns. These schedules should be immediately forwarded to each of the partners.

Back Forward a copy of my tax documents Continue

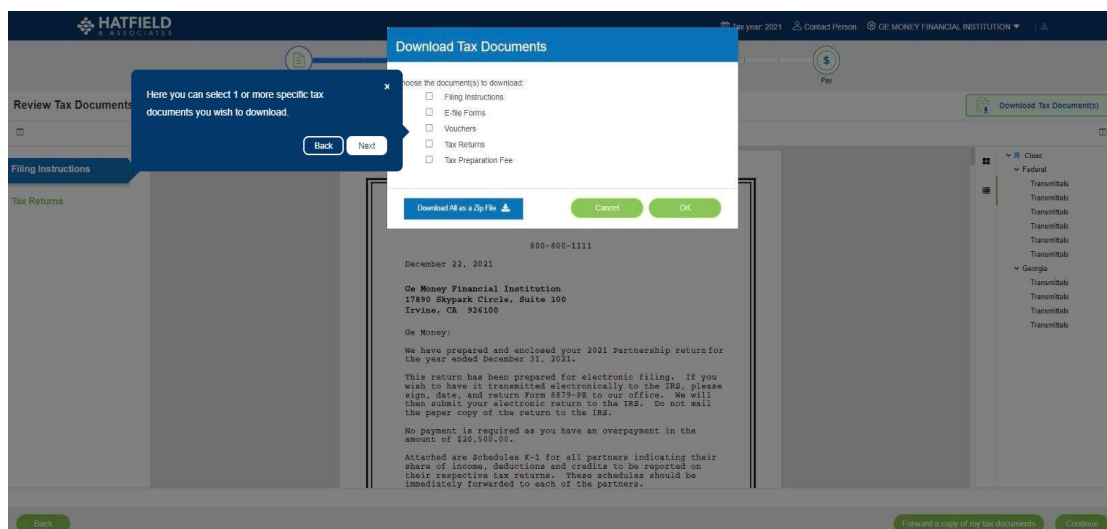
Class
Federal
Transmittals
Georgia
Transmittals



safesend.com



safesend.com



safesend.com

HATFIELD & ASSOCIATES

Review Tax Documents - Filing Instructions

Download Tax Documents

Choose the document(s) to download:

- ☐ Filing Instructions
- ☐ E-file Forms
- ☐ Vouchers
- ☐ Tax Returns
- ☐ Tax Preparation Fee

Download All as a Zip File

After you have checked the boxes for the tax documents you want to download, click **OK** to download.

Note: If you do not wish to download any tax documents, click **Cancel**.

December 22, 2021

800-800-1111

Ge Money Financial Institution
17890 Skypark Circle, Suite 100
Irvine, CA 926100

Ge Money:

We have prepared and enclosed your 2021 Partnership return for the year ended December 31, 2021.

This return has been prepared for electronic filing. If you wish to have it transmitted electronically to the IRS, please sign, date, and return Form 8879-PF to our office. We will then submit your electronic return to the IRS. Do not mail the paper copy of the return to the IRS.

No payment is required as you have an overpayment in the amount of \$20,500.00.

Attached are Schedules K-1 for all partners indicating their share of income, deductions and credits to be reported on their respective tax returns. These schedules should be immediately forwarded to each of the partners.

Back Forward a copy of my tax documents Continue



safesend.com

HATFIELD & ASSOCIATES

Review Tax Documents - Filing Instructions

Download Tax Documents

Choose the document(s) to download:

- ☐ Filing Instructions
- ☐ E-file Forms
- ☐ Vouchers
- ☐ Tax Returns
- ☐ Tax Preparation Fee

Download All as a Zip File

Click below to review your documents.

December 22, 2021

800-800-1111

Ge Money Financial Institution
17890 Skypark Circle, Suite 100
Irvine, CA 926100

Ge Money:

We have prepared and enclosed your 2021 Partnership return for the year ended December 31, 2021.

This return has been prepared for electronic filing. If you wish to have it transmitted electronically to the IRS, please sign, date, and return Form 8879-PF to our office. We will then submit your electronic return to the IRS. Do not mail the paper copy of the return to the IRS.

No payment is required as you have an overpayment in the amount of \$20,500.00.

Attached are Schedules K-1 for all partners indicating their share of income, deductions and credits to be reported on their respective tax returns. These schedules should be immediately forwarded to each of the partners.

Back Forward a copy of my tax documents Continue

GE MONEY FINAN...zip



safesend.com

Attachments



safesend.com

HATFIELD & ASSOCIATES Tax year: 2021 Contact Person GE MONEY FINANCIAL INSTITUTION

Summary Review Sign PaperFile Outbox Pay

Review Tax Documents - Attachments

[Download Tax Document\(s\)](#)

File Name	Instructions
1065_OH 4708 Paper Filed Return.pdf	Please see the attached file for download.

[Download All as a Zip File](#)

Helpful Hints

- If you have the option of saving the file or opening it in an application, choose save the file.
- Download each file individually or get everything at once in a single ZIP file. Use "ZIP ALL" for best results. If you

During the Review Tax Documents - Attachments step, you will be able to review and download any electronic attachments sent to you from your tax professional.

[Next](#)

[Back](#) [Forward a copy of my tax documents](#) [Continue](#)



safesend.com

HATFIELD ASSOCIATES Tax year: 2021 Contact Person GE MONEY FINANCIAL INSTITUTION

Summary Review Sign PaperFile Distribute Pay

Review Tax Documents - Attachments

File Name: 1065_OH 4708 Paper Filled Return.pdf

Download All as a Zip File

Instructions: Please see the attached file for download.

Helpful Hints:

- If you have the option of saving the file or opening it in an application, choose save the file.
- Download each file individually or get everything at once in a single ZIP file. Use "ZIP ALL" for best results. If you can't open the ZIP files, install WinZip (Windows) or StuffIt (Mac).

Back Forward a copy of my tax documents Continue

Modal Dialog: Review any instructions provided by your tax professional. Note: You may need to hover over the text to see all of the instructions. Back Next

HATFIELD ASSOCIATES Tax year: 2021 Contact Person GE MONEY FINANCIAL INSTITUTION

Summary Review Sign PaperFile Distribute Pay

Review Tax Documents - Attachments

File Name: 1065_OH 4708 Paper Filled Return.pdf

Instructions: Please see the attached file for download.

Download All as a Zip File

Helpful Hints:

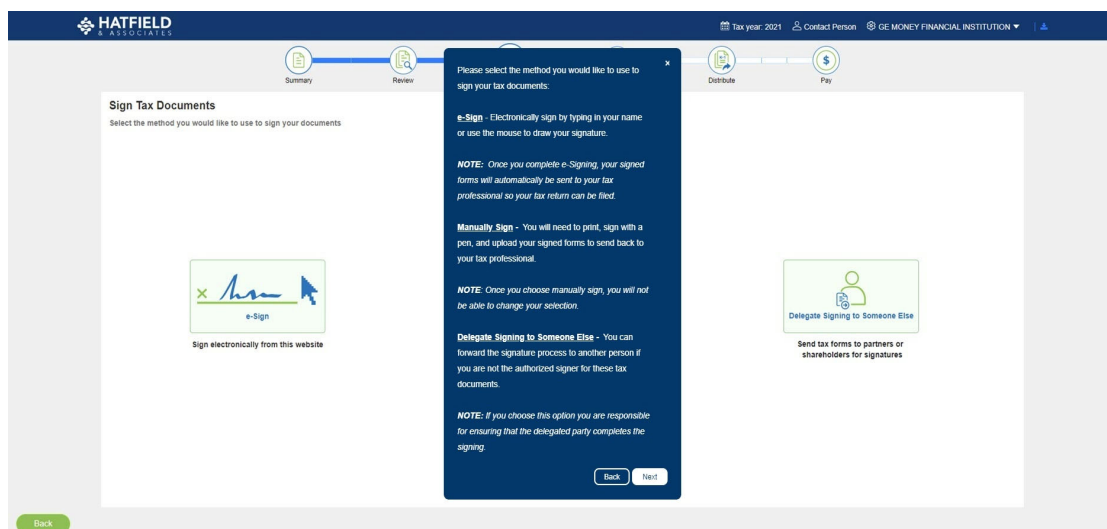
- If you have the option of saving the file or opening it in an application, choose save the file.
- Download each file individually or get everything at once in a single ZIP file. Use "ZIP ALL" for best results. If you can't open the ZIP files, install WinZip (Windows) or StuffIt (Mac).

Back Forward a copy of my tax documents Continue

Modal Dialog: Click Continue.

Signature Options

Signer Delegation Allowed



The screenshot shows the 'Sign Tax Documents' screen in the SafeSend Returns interface. A modal window is open, titled 'Please select the method you would like to use to sign your tax documents:'. The modal lists three options: e-Sign, Manually Sign, and Delegate Signing to Someone Else. Each option includes a brief description and a note. The e-Sign option states that signed forms will be sent to the tax professional. The Manually Sign option requires printing, signing with a pen, and uploading the signed forms. The Delegate Signing to Someone Else option allows forwarding the process to an authorized signer, with a note that the user is responsible for ensuring the delegated party completes the signing. The modal has 'Back' and 'Next' buttons at the bottom. The background screen shows a progress bar with 'Summary' and 'Review' steps, and a 'Sign Tax Documents' section with a 'Sign electronically from this website' option.

HATFIELD & ASSOCIATES

Tax year: 2021 | Contact Person | GE MONEY FINANCIAL INSTITUTION

Summary | Review | Distribute | Pay

Sign Tax Documents

Select the method you would like to use to sign your documents.

e-Sign
Sign electronically from this website

Manually Sign
You will need to print, sign with a pen, and upload your signed forms to send back to your tax professional.

Delegate Signing to Someone Else
Send tax forms to partners or shareholders for signatures

Please select the method you would like to use to sign your tax documents:

e-Sign - Electronically sign by typing in your name or use the mouse to draw your signature.

NOTE: Once you complete e-Signing, your signed forms will automatically be sent to your tax professional so your tax return can be filed.

Manually Sign - You will need to print, sign with a pen, and upload your signed forms to send back to your tax professional.

NOTE: Once you choose manually sign, you will not be able to change your selection.

Delegate Signing to Someone Else - You can forward the signature process to another person if you are not the authorized signer for these tax documents.

NOTE: If you choose this option you are responsible for ensuring that the delegated party completes the signing.

Back Next

Signer Delegation Disabled

HATFIELD ASSOCIATES

Tax year: 2021 | Contact Person | GE MONEY FINANCIAL INSTITUTION

Summary | Review | **Sign** | Prepare | Distribute | Pay

Sign Tax Documents

Select the method you would like to use to sign your documents.

e-Sign
Sign electronically from this website

Manually Sign
Print, Sign and Return the forms

Please select the method you would like to use to sign your tax documents:

e-Sign - Electronically sign by typing in your name or use the mouse to draw your signature.

NOTE: Once you complete e-Signing, your signed forms will automatically be sent to your tax professional so your tax return can be filed.

Manually Sign - You will need to print, sign with a pen, and upload your signed forms to send back to your tax professional.

NOTE: Once you choose manually sign, you will not be able to change your selection.

[Back](#) [Next](#)

[Back](#)

Individual Signing

HATFIELD & ASSOCIATES Tax year: 2021 Contact Person JACK ANDERSON

Summary Review **Sign** Pay

Sign Tax Documents Electronically

Before signing, you will need to verify your identity by answering a few short questions about yourself. Please verify/enter the information requested and click continue to begin.

Your Date of Birth: 1 1 1953

☐ I have reviewed my tax returns and consent to e-Sign

Spouse's Signature Required

Please provide an email address for your spouse. It may be the same as your own if you share an email account. They will receive a similar request asking them to sign their forms electronically.

Spouse's Name: JILL ANDERSON

Email Address: janderson@safesend.com

Mobile Number: Select ()-

Review or Add your Spouse's email address.

Note: If you add a mobile number, access codes will be sent via text message.

Back Next

Back Continue

HATFIELD & ASSOCIATES Tax year: 2021 Contact Person JACK ANDERSON

Summary Review **Sign** Pay

Security Questions

IRS required Disclosure: Please verify your identity by answering the following questions. These questions are generated from a third party's database. This process does not access or impact your credit report and the third party does not have access to your taxpayer information. Please answer the following.

1. Which of the following phone numbers have you ever been associated with?

- ☐ (714) 293-2250
- ☐ (714) 293-2939
- ☐ (714) 293-4276
- ☐ (714) 293-7062
- ☐ I have never been associated with any of these phone numbers

Answer the following KBA (Knowledge Based Authentication) questions to continue with electronically signing your tax forms.

Note: The KBA questions presented to you have been provided by a third party vendor, Lexus Nexus. These questions are not generated by your tax professional.

Done

Continue

HATFIELD ASSOCIATES Tax year: 2021 Contact Person JACK ANDERSON

Summary Review Sign Pay

Security Questions

IRS required Disclosure. Please verify your identity by answering the following questions. These questions are generated from a third party's database. This process does not access or impact your credit report and the third party does not have access to your taxpayer information. Please answer the following.

1. Which of the following phone numbers have you ever been associated with?

- ☐ (714) 293-2250
- ☐ (714) 293-2309
- ☐ (714) 293-4278
- ☐ (714) 293-7082
- ☐ I have never been associated with any of these phone numbers

The KBA questions presented to you have been provided by a third party vendor, Lexus Nexus. These questions are not generated by your tax professional.

Next

Continue

HATFIELD ASSOCIATES Tax year: 2021 Contact Person GE MONEY FINANCIAL INSTITUTION

Summary Review Sign Distribute Pay

1 of 3

Automatic Zoom

Do not send to FICEN. Retain this form for your records. The form 114a may be digitally signed.

Part I - Persons who have an obligation to file a Report of Foreign Bank and Financial Accounts

1. Owner last name or entity's legal name GE MONEY	2. Owner first name	3. Owner SSN
4. Spouse last name (jointly filing FBAR - see instructions below)	5. Spouse first name	6. Spouse SSN

To complete the electronic signature process, follow the flags as they guide you through each section that requires your signature.

Next

Part II - Individual or Entity Authorized to File FBAR on behalf of Persons who have an obligation to file.

10. Preparer last name James	11. Preparer first name James	12. Preparer M.I. P	13. Preparer PTIN 012345678
14. Address 11111 1st St	15. City Atlanta	16. State GA	17. ZIP+4 30301
18. Country US	19. Preparer's (last 10) employer's (Entity) name Hatfield & Associates	20. Employer EIN 123456789	21. Preparer's signature <i>James P</i>

Instructions for completing the FBAR Signature Authorization R...

This is a 90 and 900 form using Adobe Reader.

This record may be completed by the individual or entity granting such authorization (Part I) or the individual(s) authorized to perform such services. The completed record shall be signed by the individual(s) granting the authorization (Part I) and the individual(s) that will file the FBAR. The Preparing entity must be registered with the IRS E-file system. (See <http://irs.filinginstructions.gov> for registration.)

Read and complete the account owner statement in Part I.

To authorize a third party to file the Foreign Bank and Financial Accounts Report (FBAR), the account owner should complete Part I, items 1 through

Back Continue

HATFIELD ASSOCIATES Tax year: 2021 Contact Person: GE MONEY FINANCIAL INSTITUTION

Summary Review **Sign** Distribute Pay

1 of 3 Automatic Zoom

▼ Tax Document
Federal US 114A
Federal 8879-PE
Georgia GA-8453P

Do not send to FICEN. Retain this form for your records.

ENFORCEMENT NETWORK

and Financial Accounts)

3. Owner SSN

5. Spouse SSN

10. TIN

11. TIN

12. TIN

13. TIN

14. TIN

15. TIN

16. TIN

17. TIN

18. TIN

19. TIN

20. TIN

21. TIN

22. TIN

23. TIN

24. TIN

25. TIN

26. TIN

27. TIN

28. TIN

29. TIN

30. TIN

31. TIN

32. TIN

33. TIN

34. TIN

35. TIN

36. TIN

37. TIN

38. TIN

39. TIN

40. TIN

41. TIN

42. TIN

43. TIN

44. TIN

45. TIN

46. TIN

47. TIN

48. TIN

49. TIN

50. TIN

51. TIN

52. TIN

53. TIN

54. TIN

55. TIN

56. TIN

57. TIN

58. TIN

59. TIN

60. TIN

61. TIN

62. TIN

63. TIN

64. TIN

65. TIN

66. TIN

67. TIN

68. TIN

69. TIN

70. TIN

71. TIN

72. TIN

73. TIN

74. TIN

75. TIN

76. TIN

77. TIN

78. TIN

79. TIN

80. TIN

81. TIN

82. TIN

83. TIN

84. TIN

85. TIN

86. TIN

87. TIN

88. TIN

89. TIN

90. TIN

91. TIN

92. TIN

93. TIN

94. TIN

95. TIN

96. TIN

97. TIN

98. TIN

99. TIN

100. TIN

101. TIN

102. TIN

103. TIN

104. TIN

105. TIN

106. TIN

107. TIN

108. TIN

109. TIN

110. TIN

111. TIN

112. TIN

113. TIN

114. TIN

115. TIN

116. TIN

117. TIN

118. TIN

119. TIN

120. TIN

121. TIN

122. TIN

123. TIN

124. TIN

125. TIN

126. TIN

127. TIN

128. TIN

129. TIN

130. TIN

131. TIN

132. TIN

133. TIN

134. TIN

135. TIN

136. TIN

137. TIN

138. TIN

139. TIN

140. TIN

141. TIN

142. TIN

143. TIN

144. TIN

145. TIN

146. TIN

147. TIN

148. TIN

149. TIN

150. TIN

151. TIN

152. TIN

153. TIN

154. TIN

155. TIN

156. TIN

157. TIN

158. TIN

159. TIN

160. TIN

161. TIN

162. TIN

163. TIN

164. TIN

165. TIN

166. TIN

167. TIN

168. TIN

169. TIN

170. TIN

171. TIN

172. TIN

173. TIN

174. TIN

175. TIN

176. TIN

177. TIN

178. TIN

179. TIN

180. TIN

181. TIN

182. TIN

183. TIN

184. TIN

185. TIN

186. TIN

187. TIN

188. TIN

189. TIN

190. TIN

191. TIN

192. TIN

193. TIN

194. TIN

195. TIN

196. TIN

197. TIN

198. TIN

199. TIN

200. TIN

201. TIN

202. TIN

203. TIN

204. TIN

205. TIN

206. TIN

207. TIN

208. TIN

209. TIN

210. TIN

211. TIN

212. TIN

213. TIN

214. TIN

215. TIN

216. TIN

217. TIN

218. TIN

219. TIN

220. TIN

221. TIN

222. TIN

223. TIN

224. TIN

225. TIN

226. TIN

227. TIN

228. TIN

229. TIN

230. TIN

231. TIN

232. TIN

233. TIN

234. TIN

235. TIN

236. TIN

237. TIN

238. TIN

239. TIN

240. TIN

241. TIN

242. TIN

243. TIN

244. TIN

245. TIN

246. TIN

247. TIN

248. TIN

249. TIN

250. TIN

251. TIN

252. TIN

253. TIN

254. TIN

255. TIN

256. TIN

257. TIN

258. TIN

259. TIN

260. TIN

261. TIN

262. TIN

263. TIN

264. TIN

265. TIN

266. TIN

267. TIN

268. TIN

269. TIN

270. TIN

271. TIN

272. TIN

273. TIN

274. TIN

275. TIN

276. TIN

277. TIN

278. TIN

279. TIN

280. TIN

281. TIN

282. TIN

283. TIN

284. TIN

285. TIN

286. TIN

287. TIN

288. TIN

289. TIN

290. TIN

291. TIN

292. TIN

293. TIN

294. TIN

295. TIN

296. TIN

297. TIN

298. TIN

299. TIN

300. TIN

301. TIN

302. TIN

303. TIN

304. TIN

305. TIN

306. TIN

307. TIN

308. TIN

309. TIN

310. TIN

311. TIN

312. TIN

313. TIN

314. TIN

315. TIN

316. TIN

317. TIN

318. TIN

319. TIN

320. TIN

321. TIN

322. TIN

323. TIN

324. TIN

325. TIN

326. TIN

327. TIN

328. TIN

329. TIN

330. TIN

331. TIN

332. TIN

333. TIN

334. TIN

335. TIN

336. TIN

337. TIN

338. TIN

339. TIN

340. TIN

341. TIN

342. TIN

343. TIN

344. TIN

345. TIN

346. TIN

347. TIN

348. TIN

349. TIN

350. TIN

351. TIN

352. TIN

353. TIN

354. TIN

355. TIN

356. TIN

357. TIN

358. TIN

359. TIN

360. TIN

361. TIN

362. TIN

363. TIN

364. TIN

365. TIN

366. TIN

367. TIN

368. TIN

369. TIN

370. TIN

371. TIN

372. TIN

373. TIN

374. TIN

375. TIN

376. TIN

377. TIN

378. TIN

379. TIN

380. TIN

381. TIN

382. TIN

383. TIN

384. TIN

385. TIN

386. TIN

387. TIN

388. TIN

389. TIN

390. TIN

391. TIN

392. TIN

393. TIN

394. TIN

395. TIN

396. TIN

397. TIN

398. TIN

399. TIN

400. TIN

401. TIN

402. TIN

403. TIN

404. TIN

405. TIN

406. TIN

407. TIN

408. TIN

409. TIN

410. TIN

411. TIN

412. TIN

413. TIN

414. TIN

415. TIN

416. TIN

417. TIN

418. TIN

419. TIN

420. TIN

421. TIN

422. TIN

423. TIN

424. TIN

425. TIN

426. TIN

427. TIN

428. TIN

429. TIN

430. TIN

431. TIN

432. TIN

433. TIN

434. TIN

435. TIN

436. TIN

437. TIN

438. TIN

439. TIN

440. TIN

441. TIN

442. TIN

443. TIN

444. TIN

445. TIN

446. TIN

447. TIN

448. TIN

449. TIN

450. TIN

451. TIN

452. TIN

453. TIN

454. TIN

455. TIN

456. TIN

457. TIN

458. TIN

459. TIN

460. TIN

461. TIN

462. TIN

463. TIN

464. TIN

465. TIN

466. TIN

467. TIN

468. TIN

469. TIN

470. TIN

471. TIN

472. TIN

473. TIN

474. TIN

475. TIN

476. TIN

477. TIN

478. TIN

479. TIN

480. TIN

481. TIN

482. TIN

483. TIN

484. TIN

485. TIN

486. TIN

487. TIN

488. TIN

489. TIN

490. TIN

491. TIN

492. TIN

493. TIN

494. TIN

495. TIN

496. TIN

497. TIN

498. TIN

499. TIN

500. TIN

501. TIN

502. TIN

503. TIN

504. TIN

505. TIN

506. TIN

507. TIN

508. TIN

509. TIN

510. TIN

511. TIN

512. TIN

513. TIN

514. TIN

515. TIN

516. TIN

517. TIN

518. TIN

519. TIN

520. TIN

521. TIN

522. TIN

523. TIN

524. TIN

525. TIN

526. TIN

527. TIN

528. TIN

529. TIN

530. TIN

531. TIN

532. TIN

533. TIN

534. TIN

535. TIN

536. TIN

537. TIN

538. TIN

539. TIN

540. TIN

541. TIN

542. TIN

543. TIN

544. TIN

545. TIN

546. TIN

547. TIN

548. TIN

549. TIN

550. TIN

551. TIN

552. TIN

553. TIN

554. TIN

555. TIN

556. TIN

557. TIN

558. TIN

559. TIN

560. TIN

561. TIN

562. TIN

563. TIN

564. TIN

565. TIN

566. TIN

567. TIN

568. TIN

569. TIN

570. TIN

571. TIN

572. TIN

573. TIN

574. TIN

575. TIN

576. TIN

577. TIN

578. TIN

579. TIN

580. TIN

581. TIN

582. TIN

583. TIN

584. TIN

585. TIN

586. TIN

587. TIN

588. TIN

589. TIN

590. TIN

591. TIN

592. TIN

593. TIN

594. TIN

595. TIN

596. TIN

597. TIN

598. TIN

599. TIN

600. TIN

601. TIN

602. TIN

603. TIN

604. TIN

605. TIN

606. TIN

607. TIN

608. TIN

609. TIN

610. TIN

611. TIN

612. TIN

613. TIN

614. TIN

615. TIN

616. TIN

617. TIN

618. TIN

619. TIN

620. TIN

621. TIN

622. TIN

623. TIN

624. TIN

625. TIN

626. TIN

627. TIN

628. TIN

629. TIN

630. TIN

631. TIN

632. TIN

633. TIN

634. TIN

635. TIN

636. TIN

637. TIN

638. TIN

639. TIN

640. TIN

641. TIN

642. TIN

643. TIN

644. TIN

645. TIN

646. TIN

647. TIN

648. TIN

649. TIN

650. TIN

651. TIN

652. TIN

653. TIN

654. TIN

655. TIN

656. TIN

657. TIN

658. TIN

659. TIN

660. TIN

661. TIN

662. TIN

663. TIN

664. TIN

665. TIN

666. TIN

667. TIN

668. TIN

669. TIN

670. TIN

671. TIN

672. TIN

673. TIN

674. TIN

675. TIN

676. TIN

677. TIN

678. TIN

679. TIN

680. TIN

681. TIN

682. TIN

683. TIN

684. TIN

685. TIN

686. TIN

687. TIN

688. TIN

689. TIN

690. TIN

691. TIN

692. TIN

693. TIN

694. TIN

695. TIN

696. TIN

697. TIN

698. TIN

699. TIN

700. TIN

701. TIN

702. TIN

703. TIN

704. TIN

705. TIN

706. TIN

707. TIN

708. TIN

709. TIN

710. TIN

711. TIN

712. TIN

713. TIN

714. TIN

715. TIN

716. TIN

717. TIN

718. TIN

719. TIN

720. TIN

721. TIN

722. TIN

723. TIN

724. TIN

725. TIN

726. TIN

727. TIN

728. TIN

729. TIN

730. TIN

731. TIN

732. TIN

733. TIN

734. TIN

735. TIN

736. TIN

737. TIN

738. TIN

739. TIN

740. TIN

741. TIN

742. TIN

743. TIN

744. TIN

745. TIN

746. TIN

747. TIN

748. TIN

749. TIN

750. TIN

751. TIN

752. TIN

753. TIN

754. TIN

755. TIN

756. TIN

757. TIN

758. TIN

759. TIN

760. TIN

761. TIN

762. TIN

763. TIN

764. TIN

765. TIN

766. TIN

767. TIN

768. TIN

769. TIN

770. TIN

771. TIN

772. TIN

773. TIN

774. TIN

775. TIN

776. TIN

777. TIN

778. TIN

779. TIN

780. TIN

781. TIN

782. TIN

783. TIN

784. TIN

785. TIN

786. TIN

787. TIN

788. TIN

789. TIN

790. TIN

791. TIN

792. TIN

793. TIN

794. TIN

795. TIN

796. TIN

797. TIN

798. TIN

799. TIN

800. TIN

801. TIN

802. TIN

803. TIN

804. TIN

805. TIN

806. TIN

807. TIN

808. TIN

809. TIN

810. TIN

811. TIN

812. TIN

813. TIN

814. TIN

815. TIN

816. TIN

817. TIN

818. TIN

819. TIN

820. TIN

821. TIN

822. TIN

823. TIN

824. TIN

825. TIN

826. TIN

827. TIN

828. TIN

829. TIN

830. TIN

831. TIN

832. TIN

833. TIN

834. TIN

835. TIN

836. TIN

837. TIN

838. TIN

839. TIN

840. TIN

841. TIN

842. TIN

843. TIN

844. TIN

845. TIN

846. TIN

847. TIN

848. TIN

849. TIN

850. TIN

851. TIN

852. TIN

853. TIN

854. TIN

855. TIN

856. TIN

857. TIN

858. TIN

859. TIN

860. TIN

861. TIN

862. TIN

863. TIN

864. TIN

865. TIN

866. TIN

867. TIN

868. TIN

869. TIN

870. TIN

871. TIN

872. TIN

873. TIN

874. TIN

875. TIN

876. TIN

877. TIN

878. TIN

879. TIN

880. TIN

881. TIN

882. TIN

883. TIN

884. TIN

885. TIN

886. TIN

887. TIN

888. TIN

889. TIN

890. TIN

891. TIN

892. TIN

893. TIN

894. TIN

895. TIN

896. TIN

897. TIN

898. TIN

899. TIN

900. TIN

901. TIN

902. TIN

903. TIN

904. TIN

905. TIN

906. TIN

907. TIN

908. TIN

909. TIN

910. TIN

911. TIN

912. TIN

913. TIN

914. TIN

915. TIN

916. TIN

917. TIN

918. TIN

919. TIN

920. TIN

921. TIN

922. TIN

923. TIN

924. TIN

925. TIN

926. TIN

927. TIN

928. TIN

929. TIN

930. TIN

931. TIN

932. TIN

933. TIN

934. TIN

935. TIN

936. TIN

937. TIN

938. TIN

939. TIN

940. TIN

941. TIN

942. TIN

943. TIN

944. TIN

945. TIN

946. TIN

947. TIN

948. TIN

949. TIN

950. TIN

951. TIN

952. TIN

953. TIN

954. TIN

955. TIN

956. TIN

957. TIN

958. TIN

959. TIN

960. TIN

961. TIN

962. TIN

963. TIN

964. TIN

965. TIN

966. TIN

967. TIN

968. TIN

969. TIN

970. TIN

971. TIN

972. TIN

973. TIN

974. TIN

975. TIN

976. TIN

977. TIN

978. TIN

979. TIN

980. TIN

981. TIN

982. TIN

983. TIN

984. TIN

985. TIN

986. TIN

987. TIN

988. TIN

989. TIN

990. TIN

991. TIN

992. TIN

993. TIN

994. TIN

995. TIN

996. TIN

997. TIN

998. TIN

999. TIN

1000. TIN

1001. TIN

1002. TIN

1003. TIN

1004. TIN

1005. TIN

1006. TIN

1007. TIN

1008. TIN

1009. TIN

1010. TIN

1011. TIN

1012. TIN

1013. TIN

1014. TIN

1015. TIN

1016. TIN

1017. TIN

1018. TIN

1019. TIN

1020. TIN

1021. TIN

1022. TIN

1023. TIN

1024. TIN

1025. TIN

1026. TIN

1027. TIN

1028. TIN

1029. TIN

1030. TIN

1031. TIN

1032. TIN

1033. TIN

1034. TIN

1035. TIN

1036. TIN

1037. TIN

1038. TIN

1039. TIN

1040. TIN

1041. TIN

1042. TIN

1043. TIN

1044. TIN

1045. TIN

1046. TIN

1047. TIN

1048. TIN

1049. TIN

1050. TIN

1051. TIN

1052. TIN

1053. TIN

1054. TIN

1055. TIN

1056. TIN

1057. TIN

1058. TIN

1059. TIN

1060. TIN

1061. TIN

1062. TIN

1063. TIN

1064. TIN

1065. TIN

1066. TIN

1067. TIN

1068. TIN

1069. TIN

1070. TIN

1071. TIN

1072. TIN

1073. TIN

1074. TIN

1075. TIN

1076. TIN

1077. TIN

1078. TIN

1079. TIN

1080. TIN

1081. TIN

1082. TIN

1083. TIN

1084. TIN

1085. TIN

1086. TIN

1087. TIN

1088. TIN

1089. TIN

1090. TIN

1091. TIN

1092. TIN

1093. TIN

1094. TIN

1095. TIN

1096. TIN

1097. TIN

1098. TIN

1099. TIN

1100. TIN

1101. TIN

1102. TIN

1103. TIN

1104. TIN

1105. TIN

1106. TIN

1107. TIN

1108. TIN

1109. TIN

1110. TIN

1111. TIN

1112. TIN

HATFIELD ASSOCIATES Tax year: 2021 Contact Person: GLE MONEY FINANCIAL INSTITUTION

Summary Review Sign Distribute Pay

1 of 3 Automatic Zoom

▼ Tax Document
Federal US 114A
Federal 8879-PE
Georgia GA-8453P

Do not send to FISCEN. Retain this form for your records.

ENFORCEMENT NETWORK

You may also see additional fields that your tax professional has added that may require you to take action.

These items will be identified with the Next flags.

Next Email Address

RETURN SIGNATOR AND PAID PREPARED

AND THAT THE ENTRIES ON THE GA-8453P ARE COMPLETE

Once all forms are signed, click the green Continue button to move on in your tax return journey.

Back Next

US Hatfield & Associates

Instructions for completing the FBAR Signature Authorization Form

This is a fill and print form using Adobe Reader.

The record must be completed by the individual or entity granting authorization (Part I) and the individual(s) authorized to perform such services. The completed record must be signed by the individual(s) granting the authorization (Part I) and the individual(s) that will file the FBAR. The Preparing entity must be registered with FISCEN and the system. (See the Issuing these records section for more details.)

Read and complete the account owner statement in Part I.

To authorize a third party to file the Foreign Bank and Financial Accounts Report (FBAR), the account owner should complete Part I, items 1 through

17. Page 1 of 1 18. Preparer: PFIS P12345678

21. State MT 22. ZIP/postal code 45103

23. Preparer's signature *[Signature]*

Back Continue



safesend.com

HATFIELD ASSOCIATES Tax year: 2021 Contact Person: JACK ANDERSON

Summary Review Sign Pay

Spouse Electronic Signature Required

JILL ANDERSON is still required to sign and will receive an email notification sent to sarah.dill@safesend.com Change Email Add Mobile Number

Once they have completed the signing process, your documents will be forwarded to: Hatfield & Associates

Congratulations!

You have completed your portion of the signature process!

You can review and update your spouse's email address and mobile number.

Note: If a mobile number is added, access codes will be sent via text message.

Click the green Continue to move on with your tax return journey!

Back Next

Back Continue



safesend.com

Entity Signing

HATFIELD ASSOCIATES Tax year: 2021 Contact Person: GE MONEY FINANCIAL INSTITUTION

Summary Review Sign Distribute Pay

1 of 3

Do not send to FICEN. Retain this form for your records. The form 114a may be digitally signed.

Part I - Persons who have an obligation to file a Report of Foreign Bank and Financial Accounts

1. Owner last name or entity's legal name GE MONEY	2. Owner first name	3. Owner SSN
4. Spouse last name (jointly filing FBAR - see instructions below)	5. Spouse first name	6. Spouse SSN

To complete the electronic signature process, follow the flags as they guide you through each section that requires your signature.

Part II - Individual or Entity Authorized to File FBAR on behalf of Persons who have an obligation to file.

10. Preparer last name Stowe	16. Preparer first name Stowe	17. Preparer EIN 012345678	18. Preparer PTIN 40163
19. Address 11111 Main St, Suite 100	20. City Springfield, MA	21. State MA	22. ZIP+4 code 01103
23. Country code US	24. Preparer's (or 10 employee's (Entity's) name Hatfield & Associates	25. Employer EIN	26. Preparer's signature <i>Ryan Stowe</i>

Instructions for completing the FBAR Signature Authorization R...

This is a 90 and 900 form using Adobe Reader.

This record may be completed by the individual or entity granting such authorization (Part I) or the individual(s) authorized to perform such services. The completed record shall be signed by the individual(s) granting the authorization (Part I) and the individual(s) that will file the FBAR. The Preparing entity must be registered with the IRS E-file system. (See <http://www.irs.gov/efile> for registration.)

Read and complete the account owner statement in Part I.

To authorize a third party to file the Foreign Bank and Financial Accounts Report (FBAR), the account owner should complete Part I, items 1 through 6.

Back Continue

HATFIELD ASSOCIATES Tax year: 2021 Contact Person: GE MONEY FINANCIAL INSTITUTION

Summary Review **Sign** Distribute Pay

1 of 3 Automatic Draft

▼ Tax Document
Federal US 114A
Federal 8879-PE
Georgia GA-843P

Do not send to EFCEN, please file them for your records.

ENFORCEMENT NETWORK

You may also see additional fields that your tax professional has added that may require you to take action.

These items will be identified with the Next flags.

Next ☐ Email Address

RETURN'S ORIGINATOR AND PAID PREPARER

AND THAT THE ENTRIES ON THE GA-843P ARE COMPLETE

Once all forms are signed, click the green Continue button to move on in your tax return journey.

Back Next

US Hatfield & Associates

Instructions for completing the FBAR Signature Authorization L

This is a fill and print form using Adobe Reader

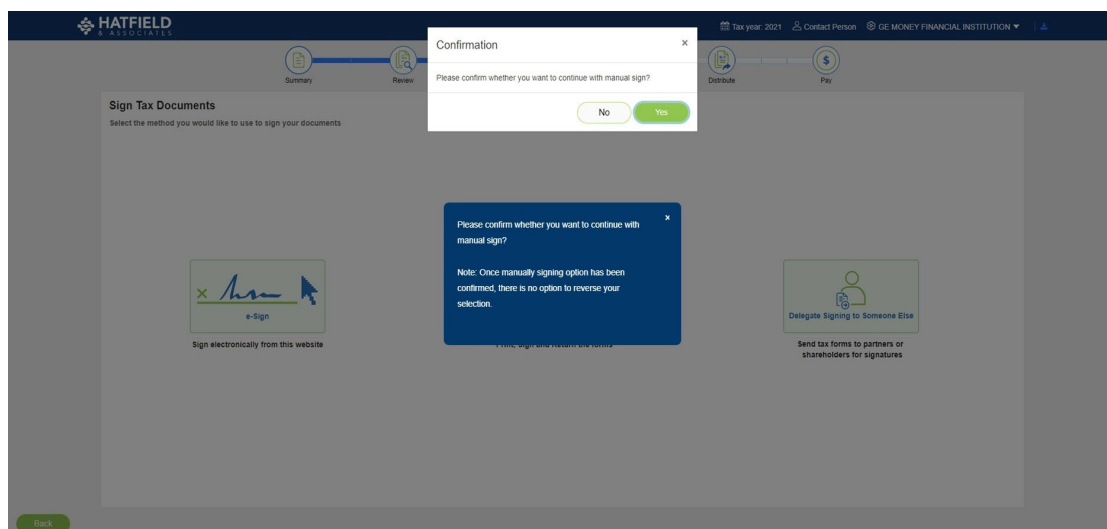
The record may be completed by the individual or entity granting such authorization (Part I) and the responsibility authorized to perform such services. The completed record shall be signed by the individual/entity granting the authorization (Part I) and the individual/entity that will file the FBAR. The Preparing entity must be registered with FinCEN's SAFE system. (See the Reporting Instructions for more information on registration.)

Read and complete the account owner statement in Part I.

To authorize a third party to file the Foreign Bank and Financial Accounts Report (FBAR), the account owner should complete Part I, items 1 through

10. TIN a ☒ BIL
11. TIN b ☐ BIL
12. TIN c ☐ BIL
13. TIN d ☐ BIL
14. TIN e ☐ BIL
15. TIN f ☐ BIL
16. TIN g ☐ BIL
17. TIN h ☐ BIL
18. TIN i ☐ BIL
19. TIN j ☐ BIL
20. TIN k ☐ BIL
21. TIN l ☐ BIL
22. TIN m ☐ BIL
23. TIN n ☐ BIL
24. TIN o ☐ BIL
25. TIN p ☐ BIL
26. TIN q ☐ BIL
27. TIN r ☐ BIL
28. TIN s ☐ BIL
29. TIN t ☐ BIL
30. TIN u ☐ BIL
31. TIN v ☐ BIL
32. TIN w ☐ BIL
33. TIN x ☐ BIL
34. TIN y ☐ BIL
35. TIN z ☐ BIL
36. TIN aa ☐ BIL
37. TIN ab ☐ BIL
38. TIN ac ☐ BIL
39. TIN ad ☐ BIL
40. TIN ae ☐ BIL
41. TIN af ☐ BIL
42. TIN ag ☐ BIL
43. TIN ah ☐ BIL
44. TIN ai ☐ BIL
45. TIN aj ☐ BIL
46. TIN ak ☐ BIL
47. TIN al ☐ BIL
48. TIN am ☐ BIL
49. TIN an ☐ BIL
50. TIN ao ☐ BIL
51. TIN ap ☐ BIL
52. TIN aq ☐ BIL
53. TIN ar ☐ BIL
54. TIN as ☐ BIL
55. TIN at ☐ BIL
56. TIN au ☐ BIL
57. TIN av ☐ BIL
58. TIN aw ☐ BIL
59. TIN ax ☐ BIL
60. TIN ay ☐ BIL
61. TIN az ☐ BIL
62. TIN ba ☐ BIL
63. TIN bb ☐ BIL
64. TIN bc ☐ BIL
65. TIN bd ☐ BIL
66. TIN be ☐ BIL
67. TIN bf ☐ BIL
68. TIN bg ☐ BIL
69. TIN bh ☐ BIL
70. TIN bi ☐ BIL
71. TIN bj ☐ BIL
72. TIN bk ☐ BIL
73. TIN bl ☐ BIL
74. TIN bm ☐ BIL
75. TIN bn ☐ BIL
76. TIN bo ☐ BIL
77. TIN bp ☐ BIL
78. TIN bq ☐ BIL
79. TIN br ☐ BIL
80. TIN bs ☐ BIL
81. TIN bt ☐ BIL
82. TIN bu ☐ BIL
83. TIN bv ☐ BIL
84. TIN bw ☐ BIL
85. TIN bx ☐ BIL
86. TIN by ☐ BIL
87. TIN bz ☐ BIL
88. TIN ca ☐ BIL
89. TIN cb ☐ BIL
90. TIN cc ☐ BIL
91. TIN cd ☐ BIL
92. TIN ce ☐ BIL
93. TIN cf ☐ BIL
94. TIN cg ☐ BIL
95. TIN ch ☐ BIL
96. TIN ci ☐ BIL
97. TIN cj ☐ BIL
98. TIN ck ☐ BIL
99. TIN cl ☐ BIL
100. TIN cm ☐ BIL
101. TIN cn ☐ BIL
102. TIN co ☐ BIL
103. TIN cp ☐ BIL
104. TIN cq ☐ BIL
105. TIN cr ☐ BIL
106. TIN cs ☐ BIL
107. TIN ct ☐ BIL
108. TIN cu ☐ BIL
109. TIN cv ☐ BIL
110. TIN cw ☐ BIL
111. TIN cx ☐ BIL
112. TIN cy ☐ BIL
113. TIN cz ☐ BIL
114. TIN da ☐ BIL
115. TIN db ☐ BIL
116. TIN dc ☐ BIL
117. TIN dd ☐ BIL
118. TIN de ☐ BIL
119. TIN df ☐ BIL
120. TIN dg ☐ BIL
121. TIN dh ☐ BIL
122. TIN di ☐ BIL
123. TIN dj ☐ BIL
124. TIN dk ☐ BIL
125. TIN dl ☐ BIL
126. TIN dm ☐ BIL
127. TIN dn ☐ BIL
128. TIN do ☐ BIL
129. TIN dp ☐ BIL
130. TIN dq ☐ BIL
131. TIN dr ☐ BIL
132. TIN ds ☐ BIL
133. TIN dt ☐ BIL
134. TIN du ☐ BIL
135. TIN dv ☐ BIL
136. TIN dw ☐ BIL
137. TIN dx ☐ BIL
138. TIN dy ☐ BIL
139. TIN dz ☐ BIL
140. TIN ea ☐ BIL
141. TIN eb ☐ BIL
142. TIN ec ☐ BIL
143. TIN ed ☐ BIL
144. TIN ee ☐ BIL
145. TIN ef ☐ BIL
146. TIN eg ☐ BIL
147. TIN eh ☐ BIL
148. TIN ei ☐ BIL
149. TIN ej ☐ BIL
150. TIN ek ☐ BIL
151. TIN el ☐ BIL
152. TIN em ☐ BIL
153. TIN en ☐ BIL
154. TIN eo ☐ BIL
155. TIN ep ☐ BIL
156. TIN eq ☐ BIL
157. TIN er ☐ BIL
158. TIN es ☐ BIL
159. TIN et ☐ BIL
160. TIN eu ☐ BIL
161. TIN ev ☐ BIL
162. TIN ew ☐ BIL
163. TIN ex ☐ BIL
164. TIN ey ☐ BIL
165. TIN ez ☐ BIL
166. TIN fa ☐ BIL
167. TIN fb ☐ BIL
168. TIN fc ☐ BIL
169. TIN fd ☐ BIL
170. TIN fe ☐ BIL
171. TIN ff ☐ BIL
172. TIN fg ☐ BIL
173. TIN fh ☐ BIL
174. TIN fi ☐ BIL
175. TIN fj ☐ BIL
176. TIN fk ☐ BIL
177. TIN fl ☐ BIL
178. TIN fm ☐ BIL
179. TIN fn ☐ BIL
180. TIN fo ☐ BIL
181. TIN fp ☐ BIL
182. TIN fq ☐ BIL
183. TIN fr ☐ BIL
184. TIN fs ☐ BIL
185. TIN ft ☐ BIL
186. TIN fu ☐ BIL
187. TIN fv ☐ BIL
188. TIN fw ☐ BIL
189. TIN fx ☐ BIL
190. TIN fy ☐ BIL
191. TIN fz ☐ BIL
192. TIN ga ☐ BIL
193. TIN gb ☐ BIL
194. TIN gc ☐ BIL
195. TIN gd ☐ BIL
196. TIN ge ☐ BIL
197. TIN gf ☐ BIL
198. TIN gg ☐ BIL
199. TIN gh ☐ BIL
200. TIN gi ☐ BIL
201. TIN gj ☐ BIL
202. TIN gk ☐ BIL
203. TIN gl ☐ BIL
204. TIN gm ☐ BIL
205. TIN gn ☐ BIL
206. TIN go ☐ BIL
207. TIN gp ☐ BIL
208. TIN gq ☐ BIL
209. TIN gr ☐ BIL
210. TIN gs ☐ BIL
211. TIN gt ☐ BIL
212. TIN gu ☐ BIL
213. TIN gv ☐ BIL
214. TIN gw ☐ BIL
215. TIN gx ☐ BIL
216. TIN gy ☐ BIL
217. TIN gz ☐ BIL
218. TIN ha ☐ BIL
219. TIN hb ☐ BIL
220. TIN hc ☐ BIL
221. TIN hd ☐ BIL
222. TIN he ☐ BIL
223. TIN hf ☐ BIL
224. TIN hg ☐ BIL
225. TIN hh ☐ BIL
226. TIN hi ☐ BIL
227. TIN hj ☐ BIL
228. TIN hk ☐ BIL
229. TIN hl ☐ BIL
230. TIN hm ☐ BIL
231. TIN hn ☐ BIL
232. TIN ho ☐ BIL
233. TIN hp ☐ BIL
234. TIN hq ☐ BIL
235. TIN hr ☐ BIL
236. TIN hs ☐ BIL
237. TIN ht ☐ BIL
238. TIN hu ☐ BIL
239. TIN hv ☐ BIL
240. TIN hw ☐ BIL
241. TIN hx ☐ BIL
242. TIN hy ☐ BIL
243. TIN hz ☐ BIL
244. TIN ia ☐ BIL
245. TIN ib ☐ BIL
246. TIN ic ☐ BIL
247. TIN id ☐ BIL
248. TIN ie ☐ BIL
249. TIN if ☐ BIL
250. TIN ig ☐ BIL
251. TIN ih ☐ BIL
252. TIN ii ☐ BIL
253. TIN ij ☐ BIL
254. TIN ik ☐ BIL
255. TIN il ☐ BIL
256. TIN im ☐ BIL
257. TIN in ☐ BIL
258. TIN io ☐ BIL
259. TIN ip ☐ BIL
260. TIN iq ☐ BIL
261. TIN ir ☐ BIL
262. TIN is ☐ BIL
263. TIN it ☐ BIL
264. TIN iu ☐ BIL
265. TIN iv ☐ BIL
266. TIN iw ☐ BIL
267. TIN ix ☐ BIL
268. TIN iy ☐ BIL
269. TIN iz ☐ BIL
270. TIN ja ☐ BIL
271. TIN jb ☐ BIL
272. TIN jc ☐ BIL
273. TIN jd ☐ BIL
274. TIN je ☐ BIL
275. TIN jf ☐ BIL
276. TIN jg ☐ BIL
277. TIN jh ☐ BIL
278. TIN ji ☐ BIL
279. TIN jj ☐ BIL
280. TIN jk ☐ BIL
281. TIN jl ☐ BIL
282. TIN jm ☐ BIL
283. TIN jn ☐ BIL
284. TIN jo ☐ BIL
285. TIN jp ☐ BIL
286. TIN jq ☐ BIL
287. TIN jr ☐ BIL
288. TIN js ☐ BIL
289. TIN jt ☐ BIL
290. TIN ju ☐ BIL
291. TIN jv ☐ BIL
292. TIN jw ☐ BIL
293. TIN jx ☐ BIL
294. TIN jy ☐ BIL
295. TIN jz ☐ BIL
296. TIN ka ☐ BIL
297. TIN kb ☐ BIL
298. TIN kc ☐ BIL
299. TIN kd ☐ BIL
300. TIN ke ☐ BIL
301. TIN kf ☐ BIL
302. TIN kg ☐ BIL
303. TIN kh ☐ BIL
304. TIN ki ☐ BIL
305. TIN kj ☐ BIL
306. TIN kl ☐ BIL
307. TIN km ☐ BIL
308. TIN kn ☐ BIL
309. TIN ko ☐ BIL
310. TIN kp ☐ BIL
311. TIN kq ☐ BIL
312. TIN kr ☐ BIL
313. TIN ks ☐ BIL
314. TIN kt ☐ BIL
315. TIN ku ☐ BIL
316. TIN kv ☐ BIL
317. TIN kw ☐ BIL
318. TIN kx ☐ BIL
319. TIN ky ☐ BIL
320. TIN kz ☐ BIL
321. TIN la ☐ BIL
322. TIN lb ☐ BIL
323. TIN lc ☐ BIL
324. TIN ld ☐ BIL
325. TIN le ☐ BIL
326. TIN lf ☐ BIL
327. TIN lg ☐ BIL
328. TIN lh ☐ BIL
329. TIN li ☐ BIL
330. TIN lj ☐ BIL
331. TIN lk ☐ BIL
332. TIN ll ☐ BIL
333. TIN lm ☐ BIL
334. TIN ln ☐ BIL
335. TIN lo ☐ BIL
336. TIN lp ☐ BIL
337. TIN lq ☐ BIL
338. TIN lr ☐ BIL
339. TIN ls ☐ BIL
340. TIN lt ☐ BIL
341. TIN lu ☐ BIL
342. TIN lv ☐ BIL
343. TIN lw ☐ BIL
344. TIN lx ☐ BIL
345. TIN ly ☐ BIL
346. TIN lz ☐ BIL
347. TIN ma ☐ BIL
348. TIN mb ☐ BIL
349. TIN mc ☐ BIL
350. TIN md ☐ BIL
351. TIN me ☐ BIL
352. TIN mf ☐ BIL
353. TIN mg ☐ BIL
354. TIN mh ☐ BIL
355. TIN mi ☐ BIL
356. TIN mj ☐ BIL
357. TIN mk ☐ BIL
358. TIN ml ☐ BIL
359. TIN mn ☐ BIL
360. TIN mo ☐ BIL
361. TIN mp ☐ BIL
362. TIN mq ☐ BIL
363. TIN mr ☐ BIL
364. TIN ms ☐ BIL
365. TIN mt ☐ BIL
366. TIN mu ☐ BIL
367. TIN mv ☐ BIL
368. TIN mw ☐ BIL
369. TIN mx ☐ BIL
370. TIN my ☐ BIL
371. TIN mz ☐ BIL
372. TIN na ☐ BIL
373. TIN nb ☐ BIL
374. TIN nc ☐ BIL
375. TIN nd ☐ BIL
376. TIN ne ☐ BIL
377. TIN nf ☐ BIL
378. TIN ng ☐ BIL
379. TIN nh ☐ BIL
380. TIN ni ☐ BIL
381. TIN nj ☐ BIL
382. TIN nk ☐ BIL
383. TIN nl ☐ BIL
384. TIN nm ☐ BIL
385. TIN nn ☐ BIL
386. TIN no ☐ BIL
387. TIN np ☐ BIL
388. TIN nq ☐ BIL
389. TIN nr ☐ BIL
390. TIN ns ☐ BIL
391. TIN nt ☐ BIL
392. TIN nu ☐ BIL
393. TIN nv ☐ BIL
394. TIN nw ☐ BIL
395. TIN nx ☐ BIL
396. TIN ny ☐ BIL
397. TIN nz ☐ BIL
398. TIN oa ☐ BIL
399. TIN ob ☐ BIL
400. TIN oc ☐ BIL
401. TIN od ☐ BIL
402. TIN oe ☐ BIL
403. TIN of ☐ BIL
404. TIN og ☐ BIL
405. TIN oh ☐ BIL
406. TIN oi ☐ BIL
407. TIN oj ☐ BIL
408. TIN ok ☐ BIL
409. TIN ol ☐ BIL
410. TIN om ☐ BIL
411. TIN on ☐ BIL
412. TIN oo ☐ BIL
413. TIN op ☐ BIL
414. TIN oq ☐ BIL
415. TIN or ☐ BIL
416. TIN os ☐ BIL
417. TIN ot ☐ BIL
418. TIN ou ☐ BIL
419. TIN ov ☐ BIL
420. TIN ow ☐ BIL
421. TIN ox ☐ BIL
422. TIN oy ☐ BIL
423. TIN oz ☐ BIL
424. TIN pa ☐ BIL
425. TIN pb ☐ BIL
426. TIN pc ☐ BIL
427. TIN pd ☐ BIL
428. TIN pe ☐ BIL
429. TIN pf ☐ BIL
430. TIN pg ☐ BIL
431. TIN ph ☐ BIL
432. TIN pi ☐ BIL
433. TIN pj ☐ BIL
434. TIN pk ☐ BIL
435. TIN pl ☐ BIL
436. TIN pm ☐ BIL
437. TIN pn ☐ BIL
438. TIN po ☐ BIL
439. TIN pp ☐ BIL
440. TIN pq ☐ BIL
441. TIN pr ☐ BIL
442. TIN ps ☐ BIL
443. TIN pt ☐ BIL
444. TIN pu ☐ BIL
445. TIN pv ☐ BIL
446. TIN pw ☐ BIL
447. TIN px ☐ BIL
448. TIN py ☐ BIL
449. TIN pz ☐ BIL
450. TIN qa ☐ BIL
451. TIN qb ☐ BIL
452. TIN qc ☐ BIL
453. TIN qd ☐ BIL
454. TIN qe ☐ BIL
455. TIN qf ☐ BIL
456. TIN qg ☐ BIL
457. TIN qh ☐ BIL
458. TIN qi ☐ BIL
459. TIN qj ☐ BIL
460. TIN qk ☐ BIL
461. TIN ql ☐ BIL
462. TIN qm ☐ BIL
463. TIN qn ☐ BIL
464. TIN qo ☐ BIL
465. TIN qp ☐ BIL
466. TIN qq ☐ BIL
467. TIN qr ☐ BIL
468. TIN qs ☐ BIL
469. TIN qt ☐ BIL
470. TIN qu ☐ BIL
471. TIN qv ☐ BIL
472. TIN qw ☐ BIL
473. TIN qx ☐ BIL
474. TIN qy ☐ BIL
475. TIN qz ☐ BIL
476. TIN ra ☐ BIL
477. TIN rb ☐ BIL
478. TIN rc ☐ BIL
479. TIN rd ☐ BIL
480. TIN re ☐ BIL
481. TIN rf ☐ BIL
482. TIN rg ☐ BIL
483. TIN rh ☐ BIL
484. TIN ri ☐ BIL
485. TIN rj ☐ BIL
486. TIN rk ☐ BIL
487. TIN rl ☐ BIL
488. TIN rm ☐ BIL
489. TIN rn ☐ BIL
490. TIN ro ☐ BIL
491. TIN rp ☐ BIL
492. TIN rq ☐ BIL
493. TIN rr ☐ BIL
494. TIN rs ☐ BIL
495. TIN rt ☐ BIL
496. TIN ru ☐ BIL
497. TIN rv ☐ BIL
498. TIN rw ☐ BIL
499. TIN rx ☐ BIL
500. TIN ry ☐ BIL
501. TIN rz ☐ BIL
502. TIN sa ☐ BIL
503. TIN sb ☐ BIL
504. TIN sc ☐ BIL
505. TIN sd ☐ BIL
506. TIN se ☐ BIL
507. TIN sf ☐ BIL
508. TIN sg ☐ BIL
509. TIN sh ☐ BIL
510. TIN si ☐ BIL
511. TIN sj ☐ BIL
512. TIN sk ☐ BIL
513. TIN sl ☐ BIL
514. TIN sm ☐ BIL
515. TIN sn ☐ BIL
516. TIN so ☐ BIL
517. TIN sp ☐ BIL
518. TIN sq ☐ BIL
519. TIN sr ☐ BIL
520. TIN ss ☐ BIL
521. TIN st ☐ BIL
522. TIN su ☐ BIL
523. TIN sv ☐ BIL
524. TIN sw ☐ BIL
525. TIN sx ☐ BIL
526. TIN sy ☐ BIL
527. TIN sz ☐ BIL
528. TIN ta ☐ BIL
529. TIN tb ☐ BIL
530. TIN tc ☐ BIL
531. TIN td ☐ BIL
532. TIN te ☐ BIL
533. TIN tf ☐ BIL
534. TIN tg ☐ BIL
535. TIN th ☐ BIL
536. TIN ti ☐ BIL
537. TIN tj ☐ BIL
538. TIN tk ☐ BIL
539. TIN tl ☐ BIL
540. TIN tm ☐ BIL
541. TIN tn ☐ BIL
542. TIN to ☐ BIL
543. TIN tp ☐ BIL
544. TIN tq ☐ BIL
545. TIN tr ☐ BIL
546. TIN ts ☐ BIL
547. TIN tt ☐ BIL
548. TIN tu ☐ BIL
549. TIN tv ☐ BIL
550. TIN tw ☐ BIL
551. TIN tx ☐ BIL
552. TIN ty ☐ BIL
553. TIN tz ☐ BIL
554. TIN ua ☐ BIL
555. TIN ub ☐ BIL
556. TIN uc ☐ BIL
557. TIN ud ☐ BIL
558. TIN ue ☐ BIL
559. TIN uf ☐ BIL
560. TIN ug ☐ BIL
561. TIN uh ☐ BIL
562. TIN ui ☐ BIL
563. TIN uj ☐ BIL
564. TIN uk ☐ BIL
565. TIN ul ☐ BIL
566. TIN um ☐ BIL
567. TIN un ☐ BIL
568. TIN uo ☐ BIL
569. TIN up ☐ BIL
570. TIN uq ☐ BIL
571. TIN ur ☐ BIL
572. TIN us ☐ BIL
573. TIN ut ☐ BIL
574. TIN uu ☐ BIL
575. TIN uv ☐ BIL
576. TIN uw ☐ BIL
577. TIN ux ☐ BIL
578. TIN uy ☐ BIL
579. TIN uz ☐ BIL
580. TIN va ☐ BIL
581. TIN vb ☐ BIL
582. TIN vc ☐ BIL
583. TIN vd ☐ BIL
584. TIN ve ☐ BIL
585. TIN vf ☐ BIL
586. TIN vg ☐ BIL
587. TIN vh ☐ BIL
588. TIN vi ☐ BIL
589. TIN vj ☐ BIL
590. TIN vk ☐ BIL
591. TIN vl ☐ BIL
592. TIN vm ☐ BIL
593. TIN vn ☐ BIL
594. TIN vo ☐ BIL
595. TIN vp ☐ BIL
596. TIN vq ☐ BIL
597. TIN vr ☐ BIL
598. TIN vs ☐ BIL
599. TIN vt ☐ BIL
600. TIN vu ☐ BIL
601. TIN vv ☐ BIL
602. TIN vw ☐ BIL
603. TIN vx ☐ BIL
604. TIN vy ☐ BIL
605. TIN vz ☐ BIL
606. TIN wa ☐ BIL
607. TIN wb ☐ BIL
608. TIN wc ☐ BIL
609. TIN wd ☐ BIL
610. TIN we ☐ BIL
611. TIN wf ☐ BIL
612. TIN wg ☐ BIL
613. TIN wh ☐ BIL
614. TIN wi ☐ BIL
615. TIN wj ☐ BIL
616. TIN wk ☐ BIL
617. TIN wl ☐ BIL
618. TIN wm ☐ BIL
619. TIN wn ☐ BIL
620. TIN wo ☐ BIL
621. TIN wp ☐ BIL
622. TIN wq ☐ BIL
623. TIN wr ☐ BIL
624. TIN ws ☐ BIL
625. TIN wt ☐ BIL
626. TIN wu ☐ BIL
627. TIN wv ☐ BIL
628. TIN ww ☐ BIL
629. TIN wx ☐ BIL
630. TIN wy ☐ BIL
631. TIN wz ☐ BIL
632. TIN xa ☐ BIL
633. TIN xb ☐ BIL
634. TIN xc ☐ BIL
635. TIN xd ☐ BIL
636. TIN xe ☐ BIL
637. TIN xf ☐ BIL
638. TIN xg ☐ BIL
639. TIN xh ☐ BIL
640. TIN xi ☐ BIL
641. TIN xj ☐ BIL
642. TIN xk ☐ BIL
643. TIN xl ☐ BIL
644. TIN xm ☐ BIL
645. TIN xn ☐ BIL
646. TIN xo ☐ BIL
647. TIN xp ☐ BIL
648. TIN xq ☐ BIL
649. TIN xr ☐ BIL
650. TIN xs ☐ BIL
651. TIN xt ☐ BIL
652. TIN xu ☐ BIL
653. TIN xv ☐ BIL
654. TIN xw ☐ BIL
655. TIN xx ☐ BIL
656. TIN xy ☐ BIL
657. TIN xz ☐ BIL
658. TIN ya ☐ BIL
659. TIN yb ☐ BIL
660. TIN yc ☐ BIL
661. TIN yd ☐ BIL
662. TIN ye ☐ BIL
663. TIN yf ☐ BIL
664. TIN yg ☐ BIL
665. TIN yh ☐ BIL
666. TIN yi ☐ BIL
667. TIN yj ☐ BIL
668. TIN yk ☐ BIL
669. TIN yl ☐ BIL
670. TIN ym ☐ BIL
671. TIN yn ☐ BIL
672. TIN yo ☐ BIL
673. TIN yp ☐ BIL
674. TIN yq ☐ BIL
675. TIN yr ☐ BIL
676. TIN ys ☐ BIL
677. TIN yt ☐ BIL
678. TIN yu ☐ BIL
679. TIN yv ☐ BIL
680. TIN yw ☐ BIL
681. TIN yx ☐ BIL
682. TIN yy ☐ BIL
683. TIN yz ☐ BIL
684. TIN za ☐ BIL
685. TIN zb ☐ BIL
686. TIN zc ☐ BIL
687. TIN zd ☐ BIL
688. TIN ze ☐ BIL
689. TIN zf ☐ BIL
690. TIN zg ☐ BIL
691. TIN zh ☐ BIL
692. TIN zi ☐ BIL
693. TIN zj ☐ BIL
694. TIN zk ☐ BIL
695. TIN zl ☐ BIL
696. TIN zm ☐ BIL
697. TIN zn ☐ BIL
698. TIN zo ☐ BIL
699. TIN zp ☐ BIL
700. TIN zq ☐ BIL
701. TIN zr ☐ BIL
702. TIN zs ☐ BIL
703. TIN zt ☐ BIL
704. TIN zu ☐ BIL
705. TIN zv ☐ BIL
706. TIN zw ☐ BIL
707. TIN zx ☐ BIL
708. TIN zy ☐ BIL
709. TIN zz ☐ BIL
710. TIN aa ☐ BIL
711. TIN ab ☐ BIL
712. TIN ac ☐ BIL
713. TIN ad ☐ BIL
714. TIN ae ☐ BIL
715. TIN af ☐ BIL
716. TIN ag ☐ BIL
717. TIN ah ☐ BIL
718. TIN ai ☐ BIL
719. TIN aj ☐ BIL
720. TIN ak ☐ BIL
721. TIN al ☐ BIL
722. TIN am ☐ BIL
723. TIN an ☐ BIL
724. TIN ao ☐ BIL
725. TIN ap ☐ BIL
726. TIN aq ☐ BIL
727. TIN ar ☐ BIL
728. TIN as ☐ BIL
729. TIN at ☐ BIL
730. TIN au ☐ BIL
731. TIN av ☐ BIL
732. TIN aw ☐ BIL
733. TIN ax ☐ BIL
734. TIN ay ☐ BIL
735. TIN az ☐ BIL
736. TIN ba ☐ BIL
737. TIN bb ☐ BIL
738. TIN bc ☐ BIL
739. TIN bd ☐ BIL
740. TIN be ☐ BIL
741. TIN bf ☐ BIL
742. TIN bg ☐ BIL
743. TIN bh ☐ BIL
744. TIN bi ☐ BIL
745. TIN bj ☐ BIL
746. TIN bk ☐ BIL
747. TIN bl ☐ BIL
748. TIN bm ☐ BIL
749. TIN bn ☐ BIL
750. TIN bo ☐ BIL
751. TIN bp ☐ BIL
752. TIN bq ☐ BIL
753. TIN br ☐ BIL

Manually Sign



HATFIELD ASSOCIATES

Tax year: 2021 | Contact Person | GE MONEY FINANCIAL INSTITUTION

Summary | Review | **Sign** | Distribute | Pay

Manual Signatures Required

Please download documents to continue

[Download documents requiring signature](#)

Click here to download your document(s).

Back | Continue

HATFIELD ASSOCIATES

Tax year: 2021 | Contact Person | GE MONEY FINANCIAL INSTITUTION

Summary | Review | **Sign** | Distribute | Pay

Manual Signatures Required

Please download documents to continue

[Download documents requiring signature](#)

After manually signing documents please select a method to send them to your tax preparer

Upload Signed Documents

Drag documents here

Or

[Click to Upload](#)

Send by Mail
HATFIELD ASSOCIATES
8186 Jackson Ave
Ann Arbor, MI 48103

Send by Fax
(800) 716-2

You do not have to upload your signed documents at this time, you can move forward with the process and upload the documents at a later time.

- Drag and drop your signed e-file forms to upload them.
- Click to Upload to browse your files, then select the signed e-file forms to upload them.
- Once a document is uploaded, you are given the option to delete the uploaded documents or upload new documents.
- The firm's mailing address is listed on the right so you can mail the documents if you prefer.
- The firm's fax number is listed on the right so you can fax the documents if you prefer.

Back | Next

Back | Continue

HATFIELD & ASSOCIATES

Tax year: 2021 | Contact Person | GE MONEY FINANCIAL INSTITUTION

Summary | Review | **Sign** | Distribute | Pay

Manual Signatures Required

Please download documents to continue

[Download documents requiring signature](#)

1 After manually signing documents please select a method to send them to your tax preparer

Upload Signed Documents

Drag documents here

Or

[Click to Upload](#)

Send by Mail
Attn: Hatfield & Associates
 8196 Jackson Rd
 Ann Arbor, MI
 48103

Send by Fax
 (800) 716-2558

[Click Continue.](#)

[Back](#) [Continue](#)

Signer Delegation

Send for Signature

Please enter information for the person you would like to delegate the signing process to

First Name Last Name

Email Confirm Email

SMS/Text enabled

Message to Signer

Once you delegate signing, you will move through the remaining steps of the tax return journey, including paper file returns if applicable.

Note: You will be able to cancel or update the delegation once you are back on the summary page.

Next

Cancel Send

Send for Signature

Please enter information for the person you would like to delegate the signing process to

First Name Last Name

Email Confirm Email

SMS/Text enabled mobile number

Message to Signer

Once you delegate signing, you will move through the remaining steps of the tax return journey, including paper file returns if applicable.

Note: You will be able to cancel or update the delegation once you are back on the summary page.

Next

Cancel Send

HATFIELD ASSOCIATES

Tax year: 2021 | Contact Person | GE MONEY FINANCIAL INSTITUTION

Sign Tax Documents
Select the method you would like to use to sign your documents

Send for Signature

Please enter information for the person you would like to delegate the signing process to

First Name: Last Name:

Email: Confirm Email:

SMS/Text enabled mobile number: (Used for authorization)

Message to Signer:

Back Next

Sign electronically from this website

Back

Here you can add a message to the person you are delegating the signing too.

Back Next

Send tax forms to partners or shareholders for signatures

HATFIELD ASSOCIATES

Tax year: 2021 | Contact Person | GE MONEY FINANCIAL INSTITUTION

Sign Tax Documents
Select the method you would like to use to sign your documents

Send for Signature

Please enter information for the person you would like to delegate the signing process to

First Name: Last Name:

Email: Confirm Email:

SMS/Text enabled mobile number: (Used for authorization)

Message to Signer:

Back Next

Sign electronically from this website

Back

Once you have entered all the information, click Send.

Delegate Signing to Someone Else

Paper File Return



safesend.com

HATFIELD & ASSOCIATES Tax year: 2021 Contact Person GE MONEY FINANCIAL INSTITUTION

Summary Review Sign Paper file Distribute Pay

A message from Hatfield & Associates

Hello GE MONEY FINANCIAL INSTITUTION,
Your tax return is complete and requires a return to be paper filed.
You will need to print all pages, sign where indicated, and mail it to the address listed prior.
Please note, Hatfield & Associates will not be mailing you a copy of this return.
If you have any questions or need further assistance, feel free to call our office at .
Thank you.

During your tax return preparation, a return has been identified with a requirement to be filed on paper.
Your tax professional has provided you the proper pages that need to be printed, signed, and mailed to the correct taxing authority.
Continue through the tax return journey to print the return(s) required to be paper filed.

Back Continue



safesend.com

HATFIELD ASSOCIATES

Tax year: 2021 | Contact Person | GE MONEY FINANCIAL INSTITUTION

Consent to Paper File Returns

I acknowledge that it is my responsibility to PRINT, SIGN and MAIL all Paper File Tax Returns to the respective Tax Authority before the due date.

[Skip to Next Step](#) [I Consent](#)

Paper File Returns

GE MONEY FINANCIAL INSTITUTION

The following tax returns must be Downloaded, Printed, Manually signed and mailed to the address provided:

Return Name	Action
Federal_CCH_1065_GE MONEY_SAMPLE	Print All Paper File Returns Download All Paper File Returns

[Back](#) [Skip to Next Step](#) [Continue](#)

HATFIELD ASSOCIATES

Tax year: 2021 | Contact Person | GE MONEY FINANCIAL INSTITUTION

Paper File Returns

GE MONEY FINANCIAL INSTITUTION

The following tax returns must be Downloaded, Printed, Manually signed and mailed to the address provided:

Return Name	Action
Alabama_CCH_1065_GE MONEY_SAMPLE	Print All Paper File Returns Download All Paper File Returns

[Back](#) [Continue](#)

HATFIELD ASSOCIATES Tax year: 2021 Contact Person GE MONEY FINANCIAL INSTITUTION

Summary Review Sign PaperFile Distribute Pay

Paper File Returns

GE MONEY FINANCIAL INSTITUTION

The following tax returns must be Downloaded, Printed, Manually signed and mailed to the address provided:

Return Name	Mailing Address
Alabama_CCH_1065_GE MONEY_SAMPLE	123

Back Continue

The following icons will allow you to take action on each return individually:

- Print individual return
- Download individual return

Note: If you have multiple returns that require paper filing, you can use the **Print All Paper File Returns** and **Download All Paper File Returns** buttons.

Back Next

HATFIELD ASSOCIATES Tax year: 2021 Contact Person GE MONEY FINANCIAL INSTITUTION

Summary Review Sign PaperFile Distribute Pay

Paper File Returns

GE MONEY FINANCIAL INSTITUTION

The following tax returns must be Downloaded, Printed, Manually signed and mailed to the address provided:

Return Name	Mailing Address	Action
Alabama_CCH_1065_GE MONEY_SAMPLE	123	

Back Continue

Click Continue.

K-1 Distribution



safesend.com

HATFIELD & ASSOCIATES Tax year: 2021 Contact Person GE MONEY FINANCIAL INSTITUTION

Summary Review Sign Preparefile Distribute Pay

Distribute K-1 Documents to Partners

Select the method you would like to distribute your K-1's

SEND

Electronically

Email them from this website

Welcome to K-1 Distribution

Here you can select how you would like to deliver your K-1 packages to your Shareholders. You can send them electronically or you can choose to download them so you can print and mail.

Delivering the K-1's electronically will require an email address for the Shareholder. You may also want to add mobile numbers for your Shareholders.

Note: If you personally have a K-1 from this entity return, you can download your K-1 during this step.

Next

Mail Hard Copies

Download Print, and Mail

Back Continue



safesend.com

K-1 Distribution Electronically

safesend.com

HATFIELD & ASSOCIATES Tax year: 2021 Contact Person: GE MONEY FINANCIAL INSTITUTION

Summary Review Sign

Distribute K-1 Documents Electronically

Select Partners to Email

<input type="checkbox"/>	Partners --	Email --	Mobile	
<input type="checkbox"/>	BIO CHEMICALS	victor.cardoso@safesend.com		
<input type="checkbox"/>	JNY PARTNERS			
<input type="checkbox"/>	MARKUP ASSOCIATES			
<input type="checkbox"/>	PAUL M HANSON			
<input type="checkbox"/>	TARAA B RODRICKS			

Here in the in the action column you can do the following:

- Click the **Edit** button to add email addresses, mobile numbers and update other shareholder information
- Click the **Download** button to download that specific K-1 package.

Next

Download Documents

Action

Back Email Documents Send Later

safesend.com

HATFIELD ASSOCIATES

Tax year: 2021 | Contact Person | GE MONEY FINANCIAL INSTITUTION

Summary | Review | Distribute | Pay

Distribute K-1 Documents Electronically

Select Partners

Review the information to ensure it is accurate.

[Back](#) [Next](#)

Update K1 Partners Details

Name: BIO CHEMICALS

SIN/EIN: 145-12-9365

Address: Address

Email: Email

Mobile: Select ()

Partner Type: Individual

Status: Pending

☒ Send update notification email to Hatfield & Associates

[Cancel](#) [Save](#)

Search Partners

Partners	Action
BIO CHEMICALS	✔ ⬇
JNY PARTNERS	✔ ⬇
MARKUP ASSOCIATES	✔ ⬇
PAUL HANSON	✔ ⬇
TARAA RODRICKS	✔ ⬇

[Download Documents](#)

[Back](#) [Email Documents](#) [Send Later](#)

HATFIELD ASSOCIATES

Tax year: 2021 | Contact Person | GE MONEY FINANCIAL INSTITUTION

Summary | Review | Sign | PaperFile | Distribute | Pay

Distribute K-1 Documents Electronically

Select Partners to Email

[Download Documents](#)

Partners	Email	Mobile	Status	Action
<input checked="" type="checkbox"/> BIO CHEMICALS	sarah.dtl@safesend.com		Not Sent	✔ ⬇
<input type="checkbox"/> JNY PARTNERS			Not Sent	✔ ⬇
<input type="checkbox"/> MARKUP ASSOCIATES			Not Sent	✔ ⬇
<input type="checkbox"/> PAUL HANSON			Not Sent	✔ ⬇
<input type="checkbox"/> TARAA RODRICKS			Not Sent	✔ ⬇

[Click below to review your documents.](#)

[Back](#) [Next](#)

[Email Documents](#) [Send Later](#)

BIO CHEMICALS_2...zip [Show all](#)

HATFIELD & ASSOCIATES Tax year: 2021 Contact Person GE MONEY FINANCIAL INSTITUTION

Distribute K-1 Documents Electronically

Select Partners to Email

Partners	Email
<input type="checkbox"/> BIO CHEMICALS	sarah.dill@safesend.com
<input type="checkbox"/> JNY PARTNERS	
<input type="checkbox"/> MARKUP ASSOCIATES	
<input type="checkbox"/> PAUL HANSON	
<input type="checkbox"/> TARAA RODRICKS	

Update K1 Partners Details

Name: BIO CHEMICALS
 SSN/EIN: 145-12-9365
 Address:
 Email: sarah.dill@safesend.com

Verify or Enter the Shareholder's email address.

Back Next

Send update notification email to HATFIELD & ASSOCIATES

Cancel Save

Download Documents

Search Partners

Partners	Action
BIO CHEMICALS	<input checked="" type="checkbox"/> <input type="checkbox"/>
JNY PARTNERS	<input checked="" type="checkbox"/> <input type="checkbox"/>
MARKUP ASSOCIATES	<input checked="" type="checkbox"/> <input type="checkbox"/>
PAUL HANSON	<input checked="" type="checkbox"/> <input type="checkbox"/>
TARAA RODRICKS	<input checked="" type="checkbox"/> <input type="checkbox"/>

Back Email Documents Send Later

HATFIELD & ASSOCIATES Tax year: 2021 Contact Person GE MONEY FINANCIAL INSTITUTION

Distribute K-1 Documents Electronically

Select Partners to Email

Partners	Email	Mobile	Status
<input type="checkbox"/> BIO CHEMICALS	victor.cardoso@safesend.com		Not Sent
<input type="checkbox"/> JNY PARTNERS			Not Sent
<input type="checkbox"/> MARKUP ASSOCIATES			Not Sent
<input type="checkbox"/> PAUL M HANSON			Not Sent
<input type="checkbox"/> TARAA B RODRICKS			Not Sent

Click Download Documents if you would like to download the K-1 packages in bulk.

Note: You can download all K-1's or download selected K-1's.

Back Next

Download Documents

Search Partners

Back Email Documents Send Later

HATFIELD & ASSOCIATES

Tax year: 2021 | Contact Person | GE MONEY FINANCIAL INSTITUTION

Distribute K-1 Documents Electronically

Select Partners to Email

Partners	Email
<input type="checkbox"/> BIO CHEMICALS	sarah.dill@safesend.com
<input type="checkbox"/> JNY PARTNERS	
<input type="checkbox"/> MARKUP ASSOCIATES	
<input type="checkbox"/> PAUL HANSON	
<input type="checkbox"/> TARA RODRICKS	

Update K1 Partners Details

Name: BIO CHEMICALS

SSN/EIN: 145-12-9365

Address: Address

Email: sarah.dill@safesend.com

Mobile: Select | () -

Partner Type: Individual

Status: Pending

☒ Send update notification email to Hatfield & Associates

You can add a mobile number for the Shareholder.

Note: Once added, when the Shareholder opens the link to the K-1 package, they will receive the access code via text message.

Back Next

Download Documents

Search Partners

Action

Back Email Documents Send Later

HATFIELD & ASSOCIATES

Tax year: 2021 | Contact Person | GE MONEY FINANCIAL INSTITUTION

Distribute K-1 Documents Electronically

Select Partners to Email

Partners	Email
<input type="checkbox"/> BIO CHEMICALS	sarah.dill@safesend.com
<input type="checkbox"/> JNY PARTNERS	
<input type="checkbox"/> MARKUP ASSOC	
<input type="checkbox"/> PAUL HANSON	
<input type="checkbox"/> TARA RODRICKS	

Update K1 Partners Details

Name: BIO CHEMICALS

SSN/EIN: 145-12-9365

Address: Address

Email: Email

Mobile: Select | () -

Partner Type: Individual

Status: Pending

☒ Send update notification email to Hatfield & Associates

Checking this box will send a notification to your tax professional letting them know Shareholder information has been updated.

Back Next

Cancel Save

Download Documents

Search Partners

Action

Back Email Documents Send Later

HATFIELD ASSOCIATES

Tax year: 2021 | Contact Person: GE MONEY FINANCIAL INSTITUTION

Summary | Review | Distribute | Pay

Distribute K-1 Documents Electronically

Select Partners to Email

Partners	Email
<input type="checkbox"/> BIO CHEMICALS	
<input type="checkbox"/> JNY PARTNERS	
<input type="checkbox"/> MARKUP ASSOCIATES	
<input type="checkbox"/> PAUL HANSON	
<input type="checkbox"/> TARAA RODRICKS	

Update K1 Partners Details

Name: BIO CHEMICALS

SIN/EIN: 145-12-9365

Address: Address

Email: Email

Mobile: Select | () -

Partner Type: Individual

Status: Pending

☒ Send update notification email to Hatfield & Associates

Cancel Save

Once you have added the email address and confirmed the information is correct, click **Save**.

Click **Cancel** if no changes were made.

Back | Email Documents | Send Later

HATFIELD ASSOCIATES

Tax year: 2021 | Contact Person: GE MONEY FINANCIAL INSTITUTION

Summary | Review | Sign | PaperFile | Distribute | Pay

Distribute K-1 Documents Electronically

Select Partners to Email

Partners	Email	Mobile	Status
<input type="checkbox"/> BIO CHEMICALS	victor.cardoso@safesend.com		Not Sent
<input type="checkbox"/> JNY PARTNERS			Not Sent
<input type="checkbox"/> MARKUP ASSOCIATES			Not Sent
<input type="checkbox"/> PAUL M HANSON			Not Sent
<input type="checkbox"/> TARAA B RODRICKS			Not Sent

Download Documents

Click **Download Documents** if you would like to download the K-1 packages in bulk.

Note: You can download all K-1's or downloaded selected K-1's.

Back Next

Back | Email Documents | Send Later

After you have added email addresses for the Shareholder's you are delivering K-1 packages to electronically, select the K-1 package(s) you would like to send.

Note: You can use select all if you have add email addresses for all K-1 packages.

Back Next

Search Partners

	Mobile	Status	Action
<input type="checkbox"/> BIO CHEMICALS		Not Sent	<input checked="" type="checkbox"/>
<input type="checkbox"/> JINY PARTNERS		Not Sent	<input checked="" type="checkbox"/>
<input type="checkbox"/> MARKUP ASSOCIATES		Not Sent	<input checked="" type="checkbox"/>
<input type="checkbox"/> PAUL HANSON		Not Sent	<input checked="" type="checkbox"/>
<input type="checkbox"/> TARAA RODRICKS		Not Sent	<input checked="" type="checkbox"/>

Back Email Documents Send Later

SafeSend Returns safesend.com

HATFIELD & ASSOCIATES Tax year: 2021 Contact Person GE MONEY FINANCIAL INSTITUTION

Summary Review Sign PaperFile Distribute Pay

Distribute K-1 Documents Electronically

Select Partners to Email

Search Partners

<input type="checkbox"/> Partners --	Email --	Mobile	Status	Action
<input type="checkbox"/> BIO CHEMICALS	victor.cardoso@safesend.com		Not Sent	<input checked="" type="checkbox"/>
<input type="checkbox"/> JINY PARTNERS			Not Sent	<input checked="" type="checkbox"/>
<input type="checkbox"/> MARKUP ASSOCIATES			Not Sent	<input checked="" type="checkbox"/>
<input type="checkbox"/> PAUL M HANSON			Not Sent	<input checked="" type="checkbox"/>
<input type="checkbox"/> TARAA B RODRICKS			Not Sent	<input checked="" type="checkbox"/>

Back Email Documents Send Later

Click **Email Documents** if you are ready to send the K-1 packages now.

Back Next

SafeSend Returns safesend.com

HATFIELD ASSOCIATES Tax year: 2021 Contact Person GE MONEY FINANCIAL INSTITUTION

Summary Review Sign PaperFile **Distribute** Pay

Distribute K-1 Documents Electronically

Download Documents

Select Partners to Email

Search Partners

<input type="checkbox"/>	Partners	Email	Mobile	Status	Action
<input type="checkbox"/>	BIO CHEMICALS	victor.cardoso@safesend.com		Not Sent	<input type="checkbox"/> <input type="checkbox"/>
<input type="checkbox"/>	JNY PARTNERS			Not Sent	<input type="checkbox"/> <input type="checkbox"/>
<input type="checkbox"/>	MARKUP ASSOCIATES			Not Sent	<input type="checkbox"/> <input type="checkbox"/>
<input type="checkbox"/>	PAUL M HANSON			Not Sent	<input type="checkbox"/> <input type="checkbox"/>
<input type="checkbox"/>	TARAA B RODRICKS			Not Sent	<input type="checkbox"/> <input type="checkbox"/>

Click **Send Later** if you would like to wait to send the K-1 packages and to continue on with your tax return journey.

Back Email Documents Send Later

Distribute K-1's by Mail

HATFIELD ASSOCIATES Tax year: 2021 Contact Person GE MONEY FINANCIAL INSTITUTION

You can select specific K-1 packages to download and print by clicking the box in front of the Shareholder's name.

Next

Download Documents

Search Partners

<input type="checkbox"/> Partners Name	Action
<input type="checkbox"/> BIO CHEMICALS	
<input type="checkbox"/> JNY PARTNERS	
<input type="checkbox"/> MARKUP ASSOCIATES	
<input type="checkbox"/> PAUL M HANSON	
<input type="checkbox"/> TARAA B RODRICKS	

Back Continue

HATFIELD ASSOCIATES Tax year: 2021 Contact Person GE MONEY FINANCIAL INSTITUTION

Summary Review Sign PaperFile Distribute Pay

Distribute K-1 Documents by Mail

Select K-1 Documents to Print

Search Partners

<input type="checkbox"/> Partners Name	Action
<input type="checkbox"/> BIO CHEMICALS	
<input type="checkbox"/> JNY PARTNERS	
<input type="checkbox"/> MARKUP ASSOCIATES	
<input type="checkbox"/> PAUL M HANSON	
<input type="checkbox"/> TARAA B RODRICKS	

Download Documents

Click Download Documents if you would like to download the K-1 packages in bulk.

Note: You can download all K-1's or downloaded selected K-1's.

Back Next

Back Continue

HATFIELD ASSOCIATES Tax year: 2021 Contact Person GE MONEY FINANCIAL INSTITUTION

Summary Review Sign PaperFile Distribute Pay

Distribute K-1 Documents by Mail

Select K-1 Documents to Print Download Documents

Search Partners

<input type="checkbox"/> Partners Name	Action
<input type="checkbox"/> BIO CHEMICALS	
<input type="checkbox"/> JNY PARTNERS	
<input type="checkbox"/> MARKUP ASSOCIATES	
<input type="checkbox"/> PAUL M HANSON	
<input type="checkbox"/> TARAA B RODRICKS	

Back Continue

Click Continue

Tax Return Payments

HATFIELD ASSOCIATES Tax year: 2021 Contact Person JACK ANDERSON

Summary | Payments | PaperFile | Pay

Payment details are listed below

Tax Payments
Select to see details

2021 Tax Payments

Due Date	Amount
Due Apr 2022	\$446,682
Due May 2022	\$81,834

Due Apr 2022 \$446,682

Due May 2022 \$81,834

The payments below are categorized by due date. When you click on the due date flag, it will expand to show you all payments due for that date and to what authority. You can give it a try now.

Payment Details:

- Federal \$501,224**
Pay
[Add payment details](#)
- Federal \$29,500**
DO NOT PAY: Scheduled for automatic withdrawal
- Connecticut \$15,958**
DO NOT PAY: Scheduled for automatic withdrawal

[Download All Payment Vouchers](#) [Download Filing Instructions](#)

[Back](#) [Continue](#)

HATFIELD ASSOCIATES Tax year: 2021 Contact Person JACK ANDERSON

Summary | Payments | PaperFile | Pay

Payment details are listed below

Tax Payments
Select to see details

2021 Tax Payments

Due Date	Amount
Due Apr 2022	\$446,682
Due May 2022	\$81,834

Due Apr 2022 \$446,682

Due May 2022 \$81,834

☒ Email me reminder 7 days before payment is due

Payment Details:

- Federal \$501,224**
Pay
[Add payment details](#)
- Federal \$29,500**
DO NOT PAY: Scheduled for automatic withdrawal
- Connecticut \$15,958**
DO NOT PAY: Scheduled for automatic withdrawal

[Download All Payment Vouchers](#) [Download Filing Instructions](#)

You can change the number of days you receive payment reminder emails or disable the email reminder by clicking the checkbox.
Note: Once you disable the reminders, you will not be able to turn them back on.

[Back](#) [Next](#)

[Back](#) [Continue](#)

HATFIELD ASSOCIATES Tax year: 2021 Contact Person JACK ANDERSON

Summary Review Sign PaperFile **Pay**

Payment details are listed below

Tax Payments
Select to see details

2021 Tax Payments

Due Date	Amount
Due Apr 2022	\$446,682
Due May 2022	\$81,834

☒ Email me reminder 7 days before payment is due

[Download All Payment Vouchers](#) [Download Filing Instructions](#)

Click here to download a PDF copy of all your voucher(s) for your records or to mail in your payment(s).

[Back](#) [Next](#)

[Back](#) [Continue](#)

HATFIELD ASSOCIATES Tax year: 2021 Contact Person JACK ANDERSON

Summary Review Sign PaperFile **Pay**

Payment details are listed below

Tax Payments
Select to see details

2021 Tax Payments

Due Date	Amount
Due Apr 2022	\$446,682
Due May 2022	\$81,834

☒ Email me reminder 7 days before payment is due

[Download All Payment Vouchers](#) [Download Filing Instructions](#)

Click here to download a PDF copy of all the filing instructions from each authority if you choose to mail in your payment.

[Back](#) [Next](#)

[Back](#) [Continue](#)

HATFIELD ASSOCIATES Tax year: 2021 Contact Person JACK ANDERSON

Summary Review Sign PaperFile **Pay**

Payment details are listed below

Tax Payments
Select to see details

2021 Tax Payments

Due Date	Amount
Due Apr 2022	\$446,682
Due May 2022	\$81,834

☒ Email me reminder 7 days before payment is due

[Download All Payment Vouchers](#) [Download Filing Instructions](#)

Due 04/18/22

Federal \$501,224 Paid

[Update payment details](#)

It looks like you do not have to take action on any of your vouchers. You can feel free to download your payment vouchers for your records.

[Next](#)

[Back](#) [Continue](#)

HATFIELD ASSOCIATES Tax year: 2021 Contact Person JACK ANDERSON

Summary Review Sign PaperFile **Pay**

Payment details are listed below

Tax Payments
Select to see details

2021 Tax Payments

Due Date	Amount
Due Apr 2022	\$446,682
Due May 2022	\$81,834

☒ Email me reminder 7 days before payment is due

[Download All Payment Vouchers](#) [Download Filing Instructions](#)

Due 04/18/22

Federal \$501,224 [Pay](#)

Due 04/18/22

Federal \$29,800 DO NOT PAY: Scheduled for automatic withdrawal

Due 04/18/22

Connecticut \$15,958 DO NOT PAY: Scheduled for automatic withdrawal

Click Pay to see the options for making your tax payments.

Note: Some vouchers will be marked with "DO NOT PAY." You do not have to take any action on these.

[Back](#) [Continue](#)

HATFIELD ASSOCIATES Tax year: 2021 Contact Person JACK ANDERSON

Summary Review Sign PaperFile **Pay**

Payment details are listed below

Tax Payments
Select to see details

2021 Tax Payments

Due Date	Amount
Due Apr 2022	\$446,682
Due May 2022	\$81,834

☒ Email me reminder 7 days before payment is due

[Download All Payment Vouchers](#) [Download Filing Instructions](#)

Due 04/18/22

Federal \$501,224

Paid

[Update payment details](#)

It looks like you have already marked this voucher as paid. If you wish to update the payment details for your records, click here.

[Back](#) [Continue](#)



safesend.com

HATFIELD ASSOCIATES Tax year: 2021 Contact Person JACK ANDERSON

Summary Review Sign PaperFile **Pay**

Payment details are listed below

Tax Payments
Select to see details

2021 Tax Payments

Due Date	Amount
Due Apr 2022	\$446,682
Due May 2022	\$81,834

☒ Email me reminder 7 days before payment is due

[Download All Payment Vouchers](#) [Download Filing Instructions](#)

Due 04/18/22

Federal \$501,224

Paid

[Update payment details](#)

By selecting Pay Online, you will be re-directed to the taxing authority's website to make an online payment there.

[Back](#) [Next](#)

Payment Information

[Download Filing Instructions](#)

Internal Revenue Service

Amount: \$501,224
Due: 04/18/2022

Pay Online Now

Select "Download Filing Instructions" above to review your payment instructions. Select "Pay Online" below to make your payment.

[Pay Online](#)

Pay By Check or Money Order

Select "Download Filing Instructions" above to review your payment and mailing instructions. Select the button below to download your payment voucher.

[Download Voucher](#)

[Done](#)

[Back](#) [Continue](#)



safesend.com

HATFIELD ASSOCIATES

Tax year: 2021 | Contact Person: JACK ANDERSON

Summary

Payment details are listed below

Tax Payments
Select to see details

2021 Tax Payments

Due Date	Amount
Due Apr 2022	\$546,682
Due May 2022	\$81,834

Due 04/18/2022

Federal \$501,234

Pay

Add payment details

Email me reminder

Payment Information

Download Filing Instructions

Internal Revenue Service

Amount: \$501,234
Due: 04/18/2022

Pay Online Now
Select "Download Filing Instructions" above to review your payment instructions. Select "Pay Online" below to make your payment.

Pay By Check or Money Order
Select "Download Filing Instructions" above to review your payment and mailing instructions. Select the button below to download your payment voucher.

Pay Online

Download Voucher

Done

By selecting **Download Voucher**, you will be able to print the payment voucher that you can use to mail in your tax payment.

Note: The filing instructions for mailing in your payment can be downloaded above.

Back Next

Back Continue



safesend.com

HATFIELD ASSOCIATES

Tax year: 2021 | Contact Person: JACK ANDERSON

Summary

Payment details are listed below

Tax Payments
Select to see details

2021 Tax Payments

Due Date	Amount
Due Apr 2022	\$546,682
Due May 2022	\$81,834

Due 04/18/2022

Federal \$501,234

Pay

Add payment details

Email me reminder

Payment Information

Download Filing Instructions

Internal Revenue Service

Amount: \$501,234
Due: 04/18/2022

Pay Online Now
Select "Download Filing Instructions" above to review your payment instructions. Select "Pay Online" below to make your payment.

Pay By Check or Money Order
Select "Download Filing Instructions" above to review your payment and mailing instructions. Select the button below to download your payment voucher.

Pay Online

Download Voucher

Done

Click Done

Back Continue



safesend.com

HATFIELD ASSOCIATES Tax year: 2021 Contact Person JACK ANDERSON

Summary Review Sign PaperFile **Pay**

Payment details are listed below

Tax Payments
Select to see details

2021 Tax Payments

Due Apr 2022 \$446,682

Due May 2022 \$81,834

☒ Email me reminder 7 days before payment is due

[Download All Payment Vouchers](#) [Download Filing Instructions](#)

Due 04/18/22 Federal \$501,224 [Pay](#) [Add payment details](#)

Due 04/18/22 Federal \$29,500 DO NOT PAY: Scheduled for automatic withdrawal

Due 04/18/22 Connecticut \$15,958 DO NOT PAY: Scheduled for automatic withdrawal

Click **Add Payment Details** to add information once you have completed your payment.

We cannot automatically record your tax payments you make by check or online. You must record it manually here.

[Back](#) [Continue](#)

HATFIELD ASSOCIATES Tax year: 2021 Contact Person JACK ANDERSON

Summary Review Sign PaperFile **Pay**

Payment details are listed below

Tax Payments
Select to see details

2021 Tax Payments

Due May 2022 \$6,577

☒ Email me reminder 7 days before payment is due

[Download All Payment Vouchers](#) [Download Filing Instructions](#)

Due 05/17/22 Alabama \$6,577 [Pay](#) [Add payment details](#)

Add Payment Details

Alabama

Amount: \$6,577

Due: 05/17/2022

!

This section is for record-keeping purposes only.
This does not initiate, process or confirm payment from the taxing authority.

[Back](#) [Next](#)

[Back](#) [Continue](#)

HATFIELD ASSOCIATES Tax year: 2021 Contact Person JACK ANDERSON

Summary Review Sign Paperfile **Pay**

Payment details are listed below

Tax Payments
Select to see details

2021 Tax Payments

Due May 2022 \$6,577

Due 05/17/22

Alabama \$6,577

Pay

Add payment details

Add Payment Details

Alabama

Amount: \$6,577

Due: 05/17/2022

Amount Paid: \$ 0.00

Date Paid: MM/DD/YYYY

Check Number: enter check number

Cancel OK

Enter in the payment amount, date, and check number (optional). If you have, click **OK**.

Otherwise, click **Cancel** if no payment information is entered. You can always come back later and update this.

Back Continue

Download All Payment Vouchers Download Filing Instructions

HATFIELD ASSOCIATES Tax year: 2021 Contact Person JACK ANDERSON

Summary Review Sign Paperfile **Pay**

Payment details are listed below

Tax Payments
Select to see details

2021 Tax Payments

Due Apr 2022 \$546,982

Due May 2022 \$81,934

Email me reminder 7 days before payment is due

Download All Payment Vouchers Download Filing Instructions

Due 04/19/22

Federal \$501,224

DO NOT PAY: Scheduled for automatic withdrawal

Pay

Add payment details

Due 04/19/22

Federal \$29,900

DO NOT PAY: Scheduled for automatic withdrawal

Due 04/18/22

Connecticut \$15,958

DO NOT PAY: Scheduled for automatic withdrawal

Click Continue.

Back Continue

HATFIELD ASSOCIATES Tax year: 2021 Contact Person JACK ANDERSON

Payment details are listed below

Tax Payments
Select to see details

2021 Tax Payments

Due Apr 2022 \$546,682

Due May 2022 \$81,834

☒ Email me reminder 7 days before payment is due

Download All Payment Vouchers Download Filing Instructions

Due 05/17/22

Georgia \$81,834

Pay

Add payment details

Click Done to conclude the tax return experience and be sent back to the summary screen.

Back Go To Estimated Voucher Done

Estimated Tax Payments

HATFIELD ASSOCIATES Tax year: 2021 Contact Person JACK ANDERSON

Summary | Search | PaperFile | Pay

Payment details are listed below

Estimated Payments
Select to see details

2022 Estimated Payments

Due Date	Amount
Due Apr 2022	\$196,927
Due Jun 2022	\$155,927
Due Sep 2022	\$155,927
Due Jan 2023	\$155,927

Estimated Payments Breakdown:

Category	Amount	Action
Federal	\$135,891	Pay
Alabama	\$0	Pay
Georgia	\$19,636	Pay

[Download All Payment Vouchers](#) [Download Filing Instructions](#)

Modal Message: The estimated payments below are categorized by due date. When you click on the due date flag, it will expand to show you all payments due for that date and to what authority. You can give it a try now.

[Next](#)

[Back](#) [Done](#)

HATFIELD ASSOCIATES Tax year: 2021 Contact Person JACK ANDERSON

Summary | Review | Pay

Payment details are listed below

Estimated Payments
Select to see details

2022 Estimated Payments

Due Date	Amount
Due Apr 2022	\$155,927
Due Jun 2022	\$155,927
Due Sep 2022	\$155,927
Due Jan 2023	\$155,927

Estimated Payments Breakdown:

Category	Amount	Action
Federal	\$135,891	Pay
Alabama	\$0	Pay
Georgia	\$19,636	Pay

☒ Email me reminder **7** days before payment is due

Modal Message: You can change the number of days you receive payment reminder emails or disable the email reminder by clicking the checkbox.
Note: Once you disable the reminders, you will not be able to turn them back on.

[Back](#) [Next](#)

[Download All Payment Vouchers](#) [Download Filing Instructions](#)

[Back](#) [Done](#)

HATFIELD ASSOCIATES Tax year: 2021 Contact Person JACK ANDERSON

Summary Review Sign PaperFile **Pay**

Payment details are listed below

Estimated Payments
Select to see details

2022 Estimated Payments

Due Date	Amount
Due Apr 2022	\$198,927
Due Jun 2022	\$155,927
Due Sep 2022	\$155,927
Due Jan 2023	\$155,927

☒ Email me reminder 7 days before payment is due

[Download All Payment Vouchers](#) [Download Filing Instructions](#)

Click here to download a PDF copy of all your vouchers for your records or to mail in your payment.

Back Next

Back Done



safesend.com

HATFIELD ASSOCIATES Tax year: 2021 Contact Person JACK ANDERSON

Summary Review Sign PaperFile **Pay**

Payment details are listed below

Estimated Payments
Select to see details

2022 Estimated Payments

Due Date	Amount
Due Apr 2022	\$155,927
Due Jun 2022	\$155,927
Due Sep 2022	\$155,927
Due Jan 2023	\$155,927

☒ Email me reminder 7 days before payment is due

[Download All Payment Vouchers](#) [Download Filing Instructions](#)

Click here to download a PDF copy of all the filing instructions from each authority if you choose to mail in your payment.

Back Next

Back Done



safesend.com

HATFIELD ASSOCIATES Tax year: 2021 Contact Person JACK ANDERSON

Summary Review Sign PaperFile **Pay**

Payment details are listed below

Estimated Payments
Select to see details

2022 Estimated Payments

Due Date	Amount
Due Apr 2022	\$196,927
Due Jun 2022	\$155,927
Due Sep 2022	\$155,927
Due Jan 2023	\$155,927

☒ Email me reminder 7 days before payment is due

[Download All Payment Vouchers](#) [Download Filing Instructions](#)

Due 04/19/22

Federal \$135,891 [Pay](#) [Update payment details](#)

It looks like you do not have to take any action on any of your vouchers. You can feel free to download your payment vouchers for your records. Please contact your tax professional if you have any questions.

[Next](#)

[Back](#) [Done](#)

HATFIELD ASSOCIATES Tax year: 2021 Contact Person JACK ANDERSON

Summary Review Sign PaperFile **Pay**

Payment details are listed below

Estimated Payments
Select to see details

2022 Estimated Payments

Due Date	Amount
Due Apr 2022	\$155,927
Due Jun 2022	\$155,927
Due Sep 2022	\$155,927
Due Jan 2023	\$155,927

☒ Email me reminder 7 days before payment is due

[Download All Payment Vouchers](#) [Download Filing Instructions](#)

Due 04/19/22

Federal \$135,891 [Pay](#) [Update payment details](#)

Due 04/05/22

Alabama \$0 [Pay](#)

Due 04/15/22

Georgia \$19,626 [Pay](#) [Add payment details](#)

Click Pay to see the options for making your estimated tax payments.

Note: Some vouchers will be marked with "DO NOT PAY". You do not have to take any action on these.

[Back](#) [Done](#)

HATFIELD ASSOCIATES Tax year: 2021 Contact Person JACK ANDERSON

Summary Review Sign PaperFile **Pay**

Payment details are listed below

Estimated Payments
Select to see details

2022 Estimated Payments

Due Date	Amount
Due Apr 2022	\$198,927
Due Jun 2022	\$198,927
Due Sep 2022	\$198,927
Due Jan 2023	\$198,927

☒ Email me reminder 7 days before payment is due

[Download All Payment Vouchers](#) [Download Filing Instructions](#)

Due 04/18/22

Amount: \$135,891

Paid

[Update payment details](#)

It looks like you have already marked this voucher as paid. If you wish to update the payment details for your records, click here.

[Back](#) [Done](#)

HATFIELD ASSOCIATES Tax year: 2021 Contact Person JACK ANDERSON

Summary Review Sign PaperFile **Pay**

Payment details are listed below

Estimated Payments
Select to see details

2022 Estimated Payments

Due Date	Amount
Due Apr 2022	\$198,927
Due Jun 2022	\$198,927
Due Sep 2022	\$198,927
Due Jan 2023	\$198,927

☒ Email me reminder 7 days before payment is due

[Download All Payment Vouchers](#) [Download Filing Instructions](#)

Due 04/18/22

Amount: \$135,891

Pay

Pay Online Now
Select "Download Filing Instructions" above to review your payment instructions. Select "Pay Online" below to make your payment.

Pay By Check or Money Order
Select "Download Filing Instructions" above to review your payment and making instructions. Select the button below to download your payment voucher.

[Pay Online](#) [Download Voucher](#)

[Back](#) [Next](#)

By selecting Pay Online, you will be re-directed to the taxing authority's website to make an online payment there.

[Done](#)

HATFIELD ASSOCIATES

Tax year: 2021 | Contact Person: JACK ANDERSON

Payment Information

Download Filing Instructions

Internal Revenue Service

Amount: \$135,891
Due: 04/18/2022

Pay Online Now

Select "Download Filing Instructions" above to review your payment instructions. Select "Pay Online" below to make your payment.

Pay By Check or Money Order

Select "Download Filing Instructions" above to review your payment and mailing instructions. Select the button below to download your payment voucher.

Pay Online | Download Voucher

By selecting **Download Voucher**, you will be able to print the estimated payment voucher that you can use to mail in your tax payment.

Note: The filing instructions for mailing in your payment can be downloaded above.

Back | Next

Done

Estimated Payments

Select to see details

2022 Estimated Payments

Due Date	Amount
Due Apr 2022	\$165,927
Due Jun 2022	\$155,927
Due Sep 2022	\$165,927
Due Jan 2023	\$165,927

Due 04/18/22

Federal \$135,891

Pay

Add payment details

Back | Done

HATFIELD ASSOCIATES

Tax year: 2021 | Contact Person: JACK ANDERSON

Payment Information

Download Filing Instructions

Internal Revenue Service

Amount: \$135,891
Due: 04/18/2022

Pay Online Now

Select "Download Filing Instructions" above to review your payment instructions. Select "Pay Online" below to make your payment.

Pay By Check or Money Order

Select "Download Filing Instructions" above to review your payment and mailing instructions. Select the button below to download your payment voucher.

Pay Online | Download Voucher

Click Done

Done

Estimated Payments

Select to see details

2022 Estimated Payments

Due Date	Amount
Due Apr 2022	\$165,927
Due Jun 2022	\$155,927
Due Sep 2022	\$165,927
Due Jan 2023	\$165,927

Due 04/18/22

Federal \$135,891

Pay

Add payment details

Back | Done

HATFIELD ASSOCIATES Tax year: 2021 Contact Person JACK ANDERSON

Summary Review Sign PaperFile Pay

Payment details are listed below

Estimated Payments
Select to see details

2022 Estimated Payments

Due Date	Amount
Due Apr 2022	\$196,827
Due Jun 2022	\$155,527
Due Sep 2022	\$155,527
Due Jan 2023	\$155,527

☒ Email me reminder **7** days before payment is due

[Download All Payment Vouchers](#) [Download Filing Instructions](#)

Due 04/18/22

Federal \$155,527

[Pay](#)

[Add payment details](#)

Due 04/05/22

Alabama \$0

[Pay](#)

[Add payment details](#)

Due 04/15/22

Georgia \$15,527

[Pay](#)

[Add payment details](#)

Click **Add Payment Details** to add information once you have completed your estimated payment.

We cannot automatically record your tax payments you make by check or online. You must record it manually here.

[Back](#) [Done](#)



safesend.com

HATFIELD ASSOCIATES Tax year: 2021 Contact Person JACK ANDERSON

Summary Review Sign PaperFile Pay

Payment details are listed below

Tax Payments
Select to see details

2021 Tax Payments

Due Date	Amount
Due May 2022	\$6,577

☒ Email me reminder **7** days before payment is due

[Download All Payment Vouchers](#) [Download Filing Instructions](#)

Due 05/17/22

Alabama \$6,577

[Pay](#)

[Add payment details](#)

Add Payment Details

Alabama

Amount: \$6,577

Due: 05/17/2022

!

This section is for record-keeping purposes only. This does not initiate, process or confirm payment from the taxing authority.

[Back](#) [Next](#)

[Back](#) [Continue](#)



safesend.com

HATFIELD ASSOCIATES Tax year: 2021 Contact Person JACK ANDERSON

Summary Review Sign PaperFile **Pay**

Payment details are listed below

Tax Payments
Select to see details

2021 Tax Payments

Due May 2022 \$6,877

Due 05/17/22

Alabama \$6,877

Pay

Add payment details

Add Payment Details

Alabama

Amount: \$6,877

Due: 05/17/2022

Amount Paid: \$ 0.00

Date Paid: MM/DD/YYYY

Check Number: enter check number

Cancel OK

Enter in the payment amount, date, and check number (optional). If you have, click **OK**.

Otherwise, click **Cancel** if no payment information is entered. You can always come back later and update this.

Back Continue

Download All Payment Vouchers Download Filing Instructions

HATFIELD ASSOCIATES Tax year: 2021 Contact Person JACK ANDERSON

Summary Review Sign PaperFile **Pay**

Payment details are listed below

Estimated Payments
Select to see details

2022 Estimated Payments

Due Apr 2022 \$155,927

Due Jun 2022 \$155,927

Due Sep 2022 \$155,927

Due Jan 2023 \$155,927

Due 04/19/22

Federal \$135,891

Pay

Add payment details

Due 04/05/22

Alabama \$0

Pay

Add payment details

Due 04/15/22

Georgia \$19,626

Pay

Add payment details

Click Done.

Done

Download All Payment Vouchers Download Filing Instructions

Tax year: 2021 | Contact Person: JACK ANDERSON

Payment details are listed below

Tax Payments
Select to see details

2021 Tax Payments
Due Apr 2022 \$546,682
Due May 2022 \$81,834

☒ Email me reminder 7 days before payment is due

Due 05/17/22

Georgia
\$81,834
Pay
[Add payment details](#)

Download All Payment Vouchers

Download Filing Instructions

Back

Click Done to conclude the tax return experience and be sent back to the summary screen.

Go To Estimated Voucher

Done